



PART NUMBER: EC202A

DESCRIPTION: optical encoder

ELECTRICAL SPECIFICATIONS

output waveform	Square wave
output signals	A, B phase
current consumption	26 mA nominal, 30 mA max.
output voltage	“H” “L”
	Vcc ~ 0.5 V min. 0.5 V max.
supply voltage	5 V dc ± 5%
output resolution (ppr)	25, 50, 75, 100, 128
pulse difference	90° ± 45°
frequency response	500 Hz max.

MECHANICAL SPECIFICATIONS

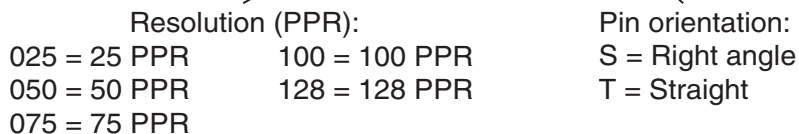
max shaft load, radial:	9.8 N
axial:	4.9 N
rotational torque	with no click: 0.5 N-cm max.
rotational life	2.5 x 10 ⁵ cycles
weight	28 g

ENVIRONMENTAL SPECIFICATIONS

operating temp	0° to +60° C
humidity	85% RH, no condensation
vibration	10 ~ 55 Hz. 1.5mm, 6 hours
shock	490 m/s ² (50 G), 11 ms, 3 axes, 3 reps

ORDERING INSTRUCTIONS

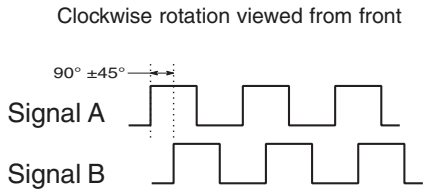
EC202AXXA-2XD



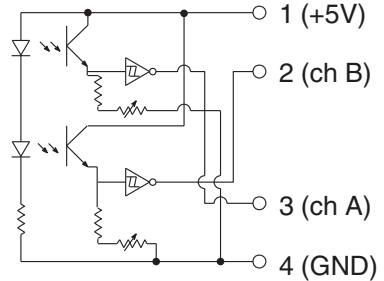
PART NUMBER: EC202A

DESCRIPTION: optical encoder

OUTPUT WAVEFORM

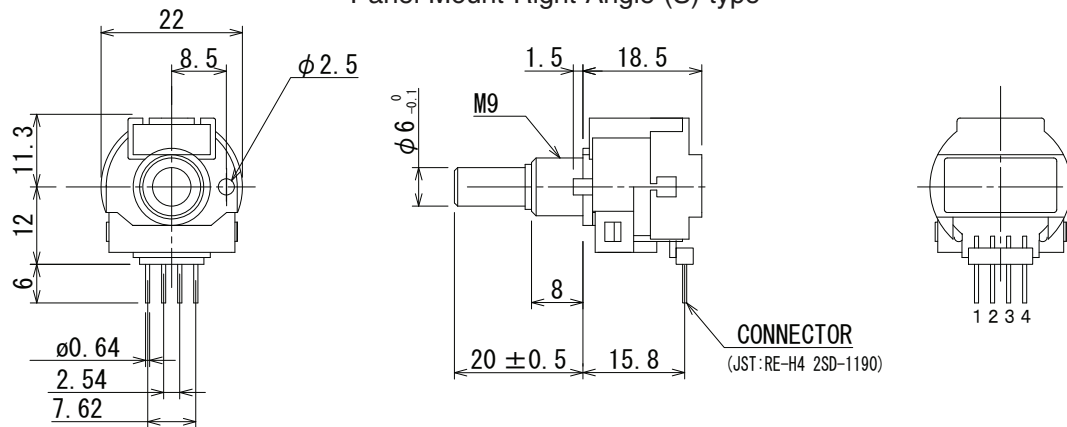


OUTPUT CIRCUIT

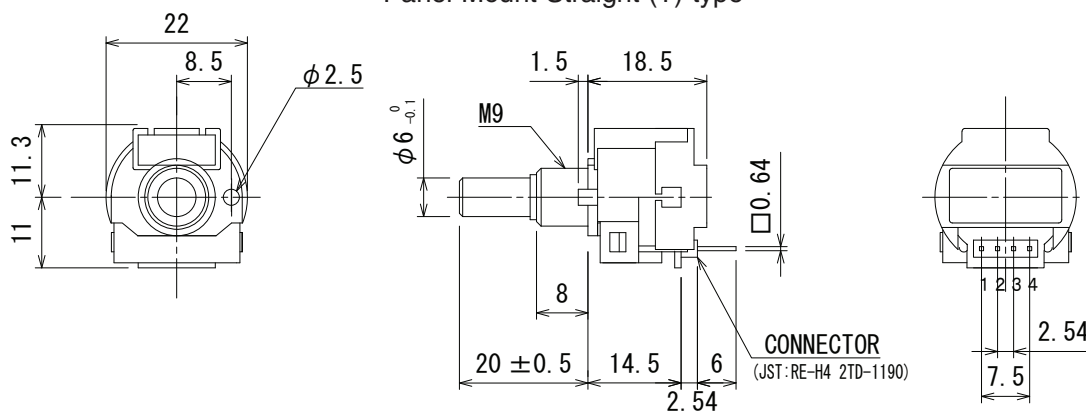


MECHANICAL DRAWING

Panel Mount Right Angle (S) type



Panel Mount Straight (T) type



Mounting Hole Dimensions
& Panel Thickness Range

t=1.6~2.5mm

