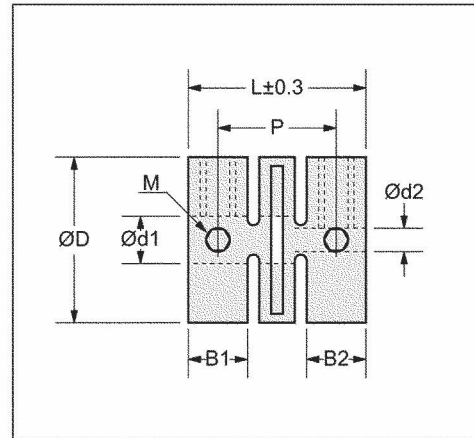


REV.	DESCRIPTION	DATE
A	NEW DRAWING	07/2010



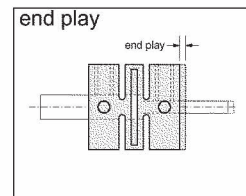
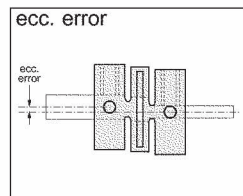
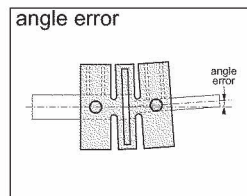
Material: 20% PBT

MODEL	Ød1	Ød2	ØD	L	P	B1	B2	M	Torque	Mass	mom. inertia
UJ 2-2	2	2	8	9	5.8	3.2	3.2	2	1.53	0.64	0.051
UJ 2.5-3	2.5	3	12	14.6	9.2	5.3	5.3	3	2.55	2.3	0.408
UJ 3-3	3	3	12	14.6	9.2	5.4	5.4	3	4.08	2.3	0.408
UJ 3.2-3.2	3.2	3.2	12	14.5	9	5	5	3	4.59	2.2	0.408
UJ 4-4	4	4	13	14.5	9.5	5	5	3	6.12	2.4	0.51
UJ 5-5	5	5	14	15	9.8	5.2	5.2	3	7.14	2.7	0.612
UJ 6-6	6	6	15	15.5	9.9	5.5	5.5	3	8.16	3	0.714
UJ 6-2.4	6	2.4	15	15.4	9.8	5.5	5.3	3	8.16	3	0.816
UJ 6-3	6	3	15	15.4	9.8	5.5	5.3	3	8.16	3	0.816
UJ 6-3.2	6	3.2	15	15.2	9.8	5.5	5.3	3	8.16	3	0.816
UJ 6-4	6	4	15	15.2	9.8	5.5	5.3	3	8.16	3	0.816
UJ 6-5	6	5	15	15.2	9.8	5.5	5.3	3	8.16	3	0.816

kgf·cm g gf·cm²

MODEL	max. angle error	max. end play	max. mis-align
UJ 2-2	3°	±0.15	0.1
UJ 2.5-3	4°	±0.2	.015
UJ 3-3	4°	±0.2	0.15
UJ 3.2-3.2	4°	±0.2	0.15
UJ 4-4	5°	±0.3	0.2
UJ 5-5	5°	±0.3	0.2
UJ 6-6	5°	±0.3	0.2

Custom bore sizes available upon request



ORDERING INSTRUCTIONS

UJ - XXX - XXX

bore1Ø bore2Ø



CUI INC

20050 SW 112th Ave.
Tualatin, OR 97062
Phone: 503-612-2300
800-275-4899
Fax: 503-612-2383
Website: www.cui.com



TITLE: plastic coupling		REV: A
PART NO. UJ Series		UNITS: MM
DRAWN BY: JRH	APPROVED BY:	SCALE: