

SPECIFICATIONS

1. Supply Voltage: 5VDC $\pm 10\%$
2. Current: 80mA max
3. Output Voltage: High = $V_{cc} - 0.5V$ min.
Low = 0.5V max.
4. Resolution: 25 PPR per channel
5. Detent Stops: 100

MECHANICAL

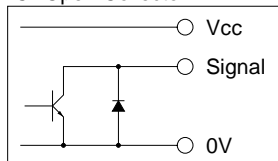
1. Max Shaft Load, radial: 2 kgf
axial: 2 kgf
2. Click Torque: Soft: 81~162 gf•cm
Std: 326~652 gf•cm
3. Rotational Life: 1×10^7 cycles

ENVIRONMENTAL

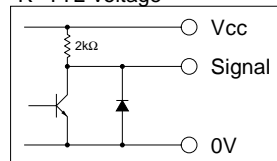
1. Operating Temp: -10° to $+60^\circ$ C
2. Storage Temp: -20° to $+85^\circ$ C
3. Humidity: $\leq 85\%$ RH, no condensation
4. Vibration: 10~55 Hz, 1.5 mm, 2 hrs
5. Shock: 50G, 11ms, 3 axes, 3 reps

OUTPUT CIRCUITS

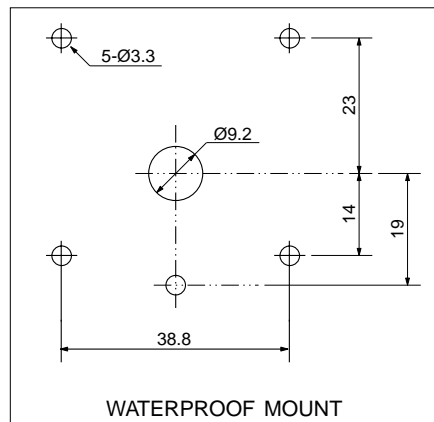
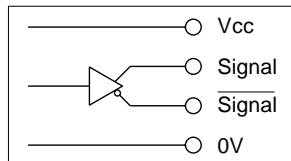
"C" Open Collector



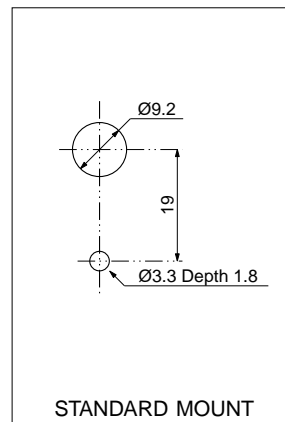
"R" TTL Voltage



"D" Differential Driver



WATERPROOF MOUNT



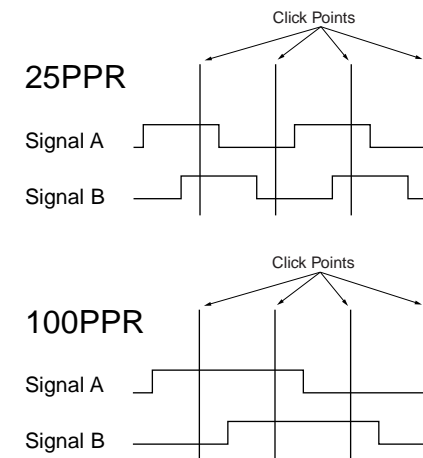
STANDARD MOUNT

ORDERING INFORMATION

RE45T

- Resolution
1 = 100PPR
2 = 25PPR
- Input Voltage:
5 = 5VDC
2 = 12/24VDC
- Action:
C = Click
S = Soft Click
- Output Type:
M = CMOS
R = 2.2kΩ Pull-up
O = Open Collector
D = Diff Driver (RS-422A)

OUTPUT WAVEFORM



CUI Inc.
9615 SW Allen Blvd. #103
Beaverton, OR 97005
Tel: 503/643-4899 FAX: 503/643-6129

DRAWN BY JAS	UPDATED 10/16/03	CHECKED 10/16/03	UNIT MM
-----------------	---------------------	---------------------	------------

PART NO. RE45TXXXXXX	REV. A
--------------------------------	------------------