



**PART NUMBER:** HC1

**DESCRIPTION:** handy pulser

**ELECTRICAL SPECIFICATIONS**

	1	5	D	2
supply voltage	12 V dc ±10%	5 V dc ±10%	5 V dc ±10%	24 V dc ±10%
current consumption (max.)	60 mA	80 mA	150 mA	30 mA
output voltage	H: ≥ 4 V L: ≤ 0.4 V	V <sub>cc</sub> - 0.5 V ≤ 0.4 V	≥ 2 V ≤ 0.4 V	≤ 0.4 V
output resolution (ppr)	25, 100	25, 100	25, 100	25, 100
contact rating	24 V max., 0.4 VA max. (selector switches)			
frequency response	1 kHz			
output waveform	Square wave			
output signals	A, B phase			

**MECHANICAL SPECIFICATIONS**

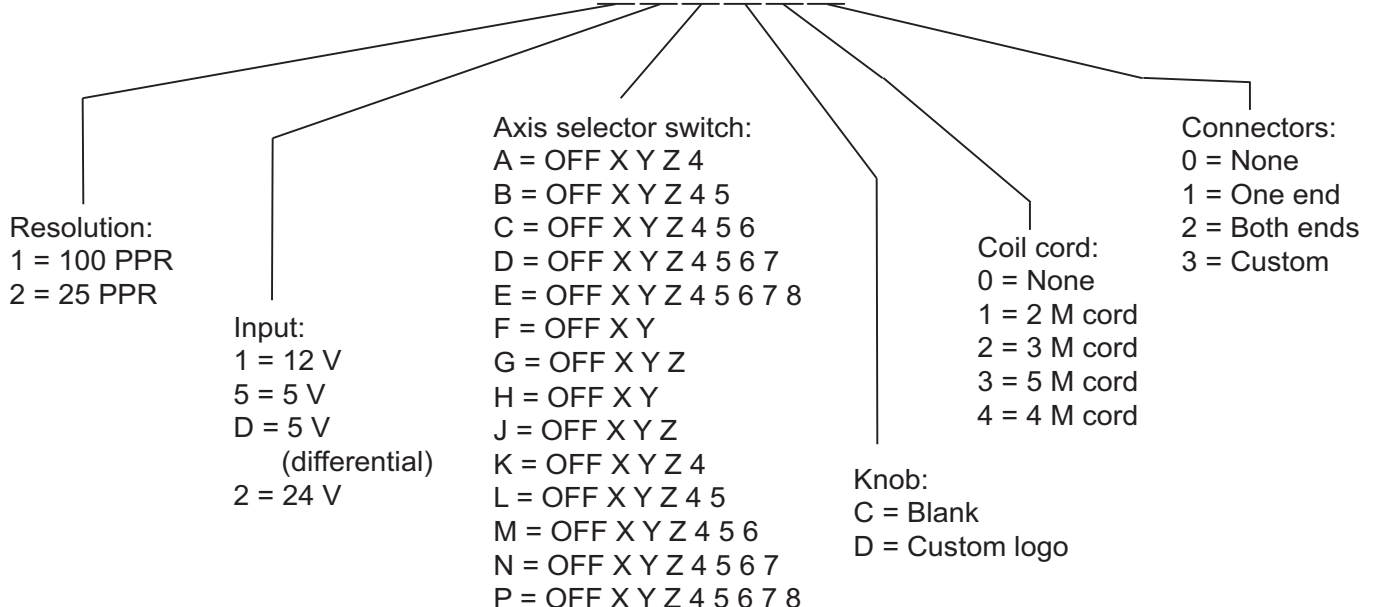
max shaft load, radial:	2 kgf
axial:	2 kgf
rotational torque	160 ~ 320 gf•cm (pulse wheel) 50 ~ 150 gf•cm (switches)
rotational life	10 <sup>6</sup> cycles (pulse wheel), 50,000 cycles (switches)

**ENVIRONMENTAL SPECIFICATIONS**

operating temp	-10° to +60° C
storage temp	-40° to +70° C
humidity	≤ 85% RH, no condensation
vibration	10~55 Hz, 1.5 mm, 2 hours
shock	50G, 11 ms, 3 axes, 3 reps

**ORDERING INSTRUCTIONS**

**HC1XXXXXXXX**



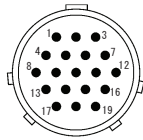
**PART NUMBER:** HC1

**DESCRIPTION:** handy pulser

### OUTPUT WAVEFORM



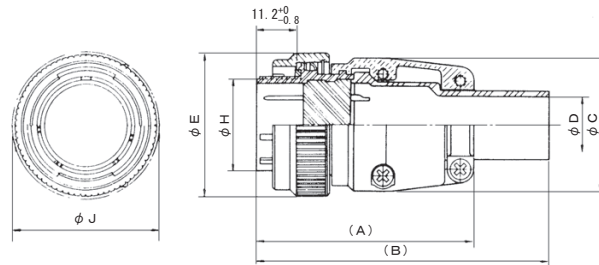
### MALE INSERT CONNECTOR ARRANGEMENT



● . . . .  $\phi 1.0\text{mm}$  Contacts

Note : Connector mating side for plug shell (Standard insert position)

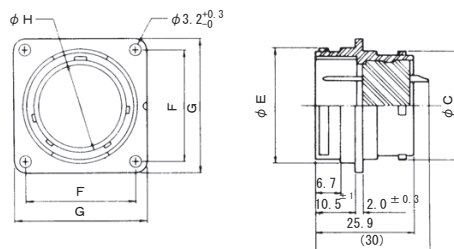
### MALE INSERT CONNECTOR



note: Daiichi model number: EBSP-2119MG

Shell Size	A	B	C $\pm 0.5$	D $\pm 0.5$	E $\pm 1$	H $\begin{smallmatrix} +0 \\ -0.3 \end{smallmatrix}$	J $\pm 1$
21	55.6	75.6	31.6	12.2	33.5	20.5	35.5

### FEMALE INSERT CONNECTOR



note: Daiichi model number: EBR-2119FGS

Shell Size	C $\pm 0.5$	E $\pm 0.3$	F $\pm 0.2$	G $\pm 0.5$	H
21	24.3	26	26	32	20.7

**PART NUMBER:** HC1

**DESCRIPTION:** handy pulser

**MECHANICAL DRAWING**

