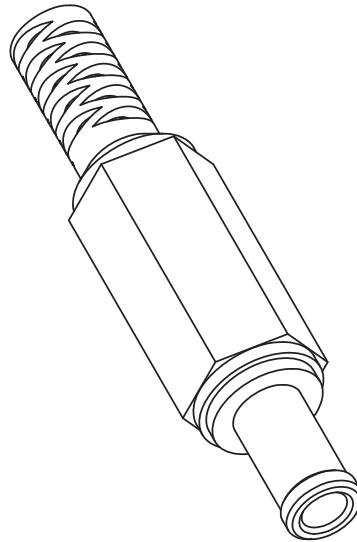
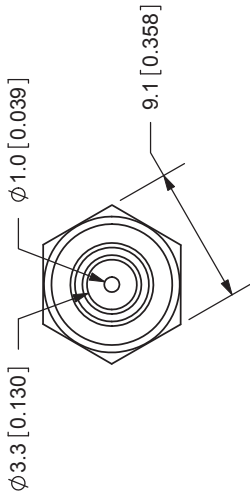
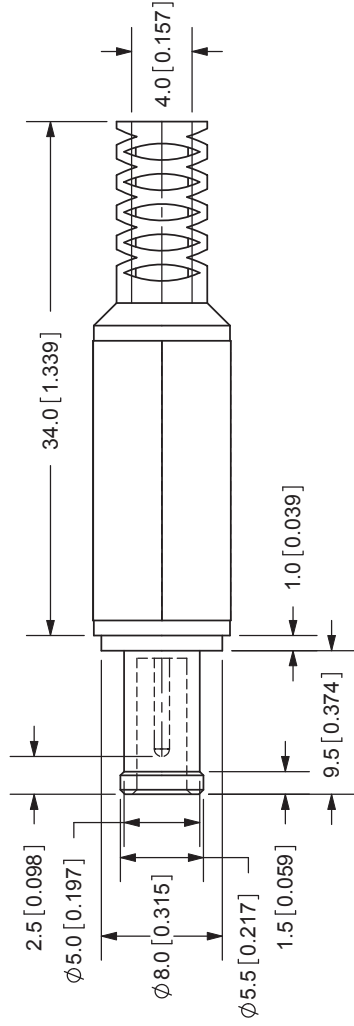


| | | |
|------|-------------|-----------|
| REV. | DESCRIPTION | DATE |
| A | NEW DRAWING | 7/17/2006 |



TOLERANCE:
 X.X ±0.2mm
 X.XX ±0.1mm
 X.XXX ±0.05mm



20050 SW 112th Ave.
 Tualatin, OR 97062
 Phone: 503-612-2300
 800-275-4899
 Fax: 503-612-2383
 Website: www.cui.com

SPECIFICATIONS:
 RATING: 24V DC @ 6A
 INSULATION RESISTANCE: 100M OHMS MIN: 500V DC
 VOLTAGE WITHSTAND: 500V AC R.M.S. FOR 1 MINUTE
 LIFE: 5,000 CYCLES
 OPERATING TEMP: 0° ~ +40°C

| COVER | MATERIAL | PLATING |
|---------------|----------|--------------|
| PIN | PVC | Black Color |
| BARREL | Brass | Nickel |
| TERMINALS | Brass | Nickel |
| TIP INSULATOR | Brass | Nickel |
| | POM | Yellow Color |

| | |
|----------------------|--------------------|
| TITLE: DC POWER PLUG | REV: A |
| PART NO: PP-015 | UNITS: MM [INCHES] |
| DRAWN BY: ZRJ | APPROVED BY: |
| | SCALE: 2:1 |