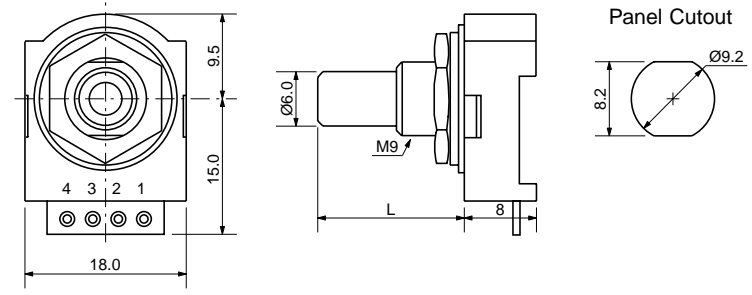
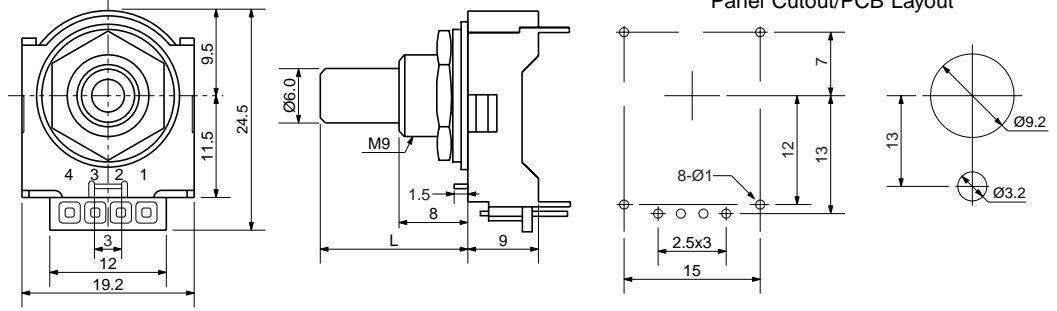


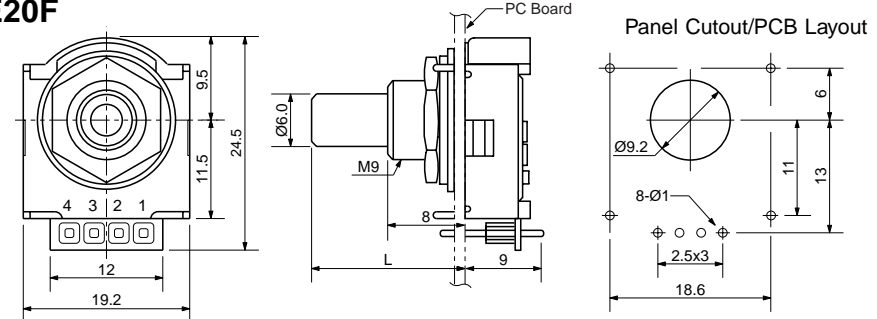
RE20S



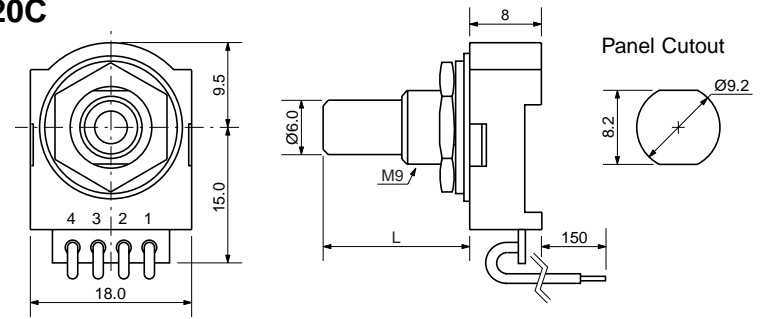
RE20V



RE20F



RE20C



SPECIFICATIONS

ELECTRICAL

- Input Power: 5.0 VDC ±5% @ 7mA
- Output Voltage: $H = V_{cc} - 0.4V$
 $L \leq 0.4V$
- Resolution: 20, 25 PPR
- Output Type: TTL Compatible
- Max. Freq. Response: 500 Hz

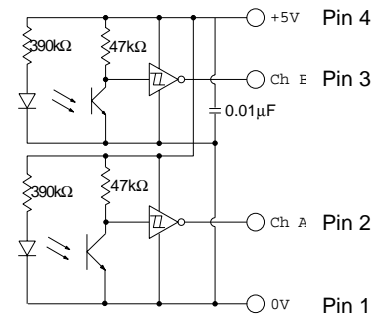
MECHANICAL

- Max Shaft Load, radial: 1.0 kgf
axial: 1.0 kgf
- Rotational Angle: 360° continuous
- Click Torque: 100 gf•cm max.
- Rotational Life: 2.5×10^6 cycles

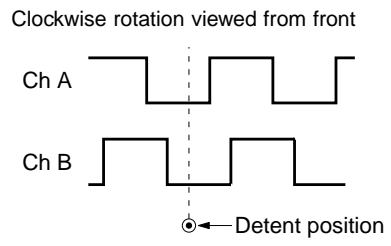
ENVIRONMENTAL

- Operating Temp: 0° to +60° C
- Storage Temp: -20° to +80° C
- Humidity: ≤85% RH, no condensation
- Vibration: 10~55 Hz, 1.5 mm, 2 hrs
- Shock: 50G, 6ms, 3 axes, 3 reps

OUTPUT CIRCUIT




OUTPUT WAVEFORM



ORDERING INSTRUCTIONS

RE20X X XX X XX

- N: Non-Drip Proof
- P: Drip Proof
- S: Solder Hole
- C: Lead wire
- V: Vertical Mount
- F: Front Mount
- C: Detent
- " ": No Detent
- 16: 16mm shaft
- 20: 20mm shaft
- 20: 20 PPR
- 25: 25 PPR

 CUI Stack, Inc. 9615 SW Allen Blvd. #103 Beaverton, OR 97005 Tel: 503/643-4899 FAX: 503/643-6129			
PART NO. RE20XXXXXXX			REV. A