

**SPECIFICATIONS**

**ELECTRICAL**

1. Input Power: 3.3 or 5.0 VDC  $\pm 10\%$
2. Output Voltage:  $H = V_{cc} - 0.5V$   
 $L \leq 0.5V$
3. Resolution: 16 PPR, 25 PPR
4. Output Type: TTL Compatible
5. Max. Freq. Response: 500 Hz

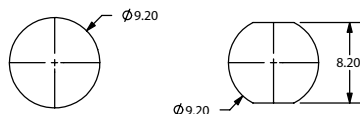
**MECHANICAL**

1. Max Shaft Load, radial: 5.0 kgf  
axial: 5.0 kgf
2. Rotational Angle: 360° continuous
3. Click Torque: 30~70 gf\*cm
4. Rotational Life: 1,000,000 cycles

**ENVIRONMENTAL**

1. Operating Temp: 0° to +60° C
2. Storage Temp: -20° to +80° C
3. Humidity:  $\leq 85\%$  RH, no condensation
4. Vibration: 10~55 Hz, 1.5 mm, 2 hrs
5. Shock: 50G, 6ms, 3 axes, 3 reps

**HOLE LAYOUT**



**ORDERING INSTRUCTIONS**

RE24N    C16/24F

Termination Options:  
C = Cable Type  
F = Front Mount  
S = Solder Holes  
V = Vertical Mount

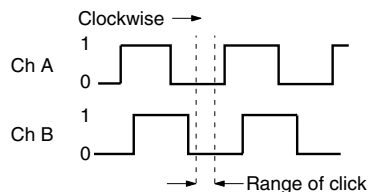
Detent:  
C = Click

Input Voltage:  
A = 5VDC  $\pm 10\%$   
B = 3.3VDC  $\pm 10\%$

Resolution:  
16 = 16 PPR  
25 = 25 PPR



**OUTPUT WAVEFORM**



CUI, Inc.  
20050 SW 112th Ave  
Tualatin, OR 97062  
Tel: 503/612-2300 FAX: 503/612-2383

DRAWN BY AJR	UPDATED 05/22/07	CHECKED 05/22/07	RELEASED
PART NO. <b>RE24NXXXC16/24FX</b>			REV. <b>A</b>