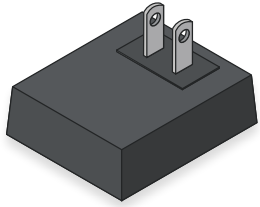
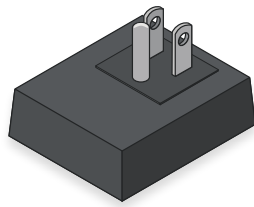


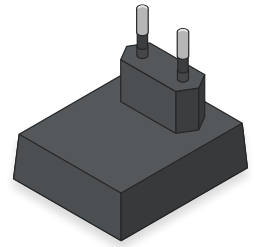
WORLD PLUG & INPUT VOLTAGE GUIDE



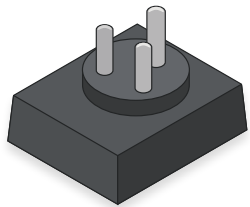
A



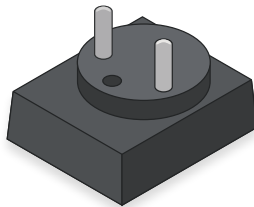
B



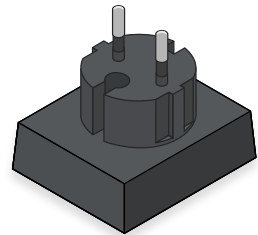
C



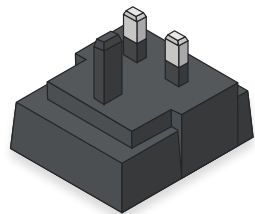
D



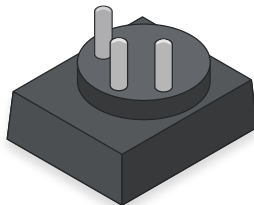
E



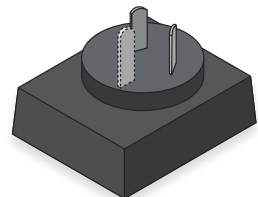
F



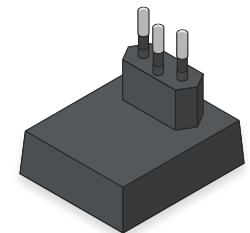
G



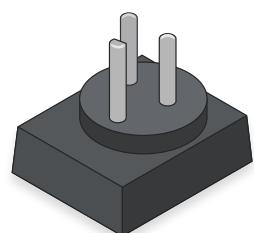
H



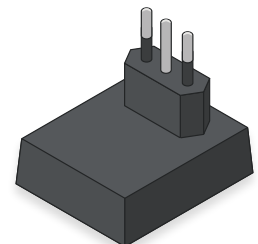
I



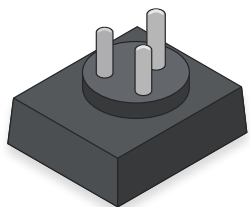
J



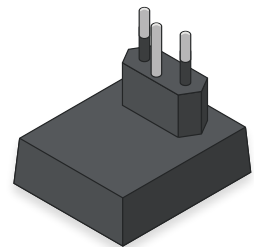
K



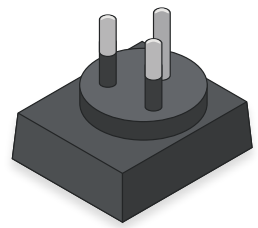
L



M



N



O

WORLD PLUG & INPUT VOLTAGE GUIDE

| Country | Plug type | Voltage | Hz |
|------------------------|---------------|-----------|-------|
| Afghanistan | C, F | 220 V | 50 Hz |
| Albania | C, F | 230 V | 50 Hz |
| Algeria | C, F | 230 V | 50 Hz |
| American Samoa | A, B, F, I | 120 V | 60 Hz |
| Andorra | C, F | 230 V | 50 Hz |
| Angola | C | 220 V | 50 Hz |
| Anguilla | A | 110 V | 60 Hz |
| Antigua | A, B | 230 V | 60 Hz |
| Argentina | C, I | 220 V | 50 Hz |
| Armenia | C, F | 230 V | 50 Hz |
| Aruba | A, B, F | 127 V | 60 Hz |
| Australia | I | 240 V | 50 Hz |
| Austria | C, F | 230 V | 50 Hz |
| Azerbaijan | C, F | 220 V | 50 Hz |
| Azores | F | 230 V | 50 Hz |
| Bahamas | A, B | 120 V | 60 Hz |
| Bahrain | G | 230 V | 50 Hz |
| Balearic Islands | C, F | 230 V | 50 Hz |
| Bangladesh | C, D, G, K | 220 V | 50 Hz |
| Barbados | A, B | 115 V | 50 Hz |
| Belarus | C, F | 220 V | 50 Hz |
| Belgium | C, E | 230 V | 50 Hz |
| Belize | A, B, G | 110/220 V | 60 Hz |
| Benin | C, E | 220 V | 50 Hz |
| Bermuda | A, B | 120 V | 60 Hz |
| Bhutan | C, D, F, G, M | 230 V | 50 Hz |
| Bolivia | A, C | 115/230 V | 50 Hz |
| Bosnia & Herzegovina | C, F | 230 V | 50 Hz |
| Botswana | D, G, M | 230 V | 50 Hz |
| Brazil | C, N | 127/220 V | 60 Hz |
| British Virgin Islands | A, B | 110 V | 60 Hz |
| Brunei Darussalam | G | 240 V | 50 Hz |
| Bulgaria | C, F | 230 V | 50 Hz |
| Burkina Faso | C, E | 220 V | 50 Hz |
| Burundi | C, E | 220 V | 50 Hz |
| Cambodia | A, C, G | 230 V | 50 Hz |
| Cameroon | C, E | 220 V | 50 Hz |
| Canada | A, B | 120 V | 60 Hz |

| Country | Plug type | Voltage | Hz |
|--------------------------|------------|---------|-------|
| Canary Islands | C, F | 230 V | 50 Hz |
| Cape Verde | C, F | 220 V | 50 Hz |
| Cayman Islands | A, B | 120 V | 60 Hz |
| Central African Republic | C, E | 220 V | 50 Hz |
| Chad | C, D, E, F | 220 V | 50 Hz |
| Channel Islands | C, G | 230 V | 50 Hz |
| Chile | C, L | 220 V | 50 Hz |
| China (Mainland) | A, C, I | 220 V | 50 Hz |
| Colombia | A, B | 110 V | 60 Hz |
| Comoros | C, E | 220 V | 50 Hz |
| Congo - Brazzaville | C, E | 230 V | 50 Hz |
| Congo - Kinshasa | C, D, E | 220 V | 50 Hz |
| Cook Islands | I | 240 V | 50 Hz |
| Costa Rica | A, B | 120 V | 60 Hz |
| Cote d'Ivoire | C, E | 230 V | 50 Hz |
| Croatia | C, F | 230 V | 50 Hz |
| Cuba | A, B | 110 V | 60 Hz |
| Cyprus | G | 240 V | 50 Hz |
| Czech Republic | C, E | 230 V | 50 Hz |
| Denmark | C, F, E, K | 230 V | 50 Hz |
| Djibouti | C, E | 220 V | 50 Hz |
| Dominica | D, G | 230 V | 50 Hz |
| Dominican Rep. | A, B | 110 V | 60 Hz |
| Ecuador | A, B | 120 V | 60 Hz |
| Egypt | C, F | 220 V | 50 Hz |
| El Salvador | A, B | 115 V | 60 Hz |
| Equatorial Guinea | C, E | 220 V | 50 Hz |
| Eritrea | C, L | 230 V | 50 Hz |
| Estonia | C, F | 230 V | 50 Hz |
| Ethiopia | C, F, L | 220 V | 50 Hz |
| Faroe Islands | C, F, E, K | 230 V | 50 Hz |
| Falkland Islands | G | 240 V | 50 Hz |
| Fiji | I | 240 V | 50 Hz |
| Finland | C, F | 230 V | 50 Hz |
| France | C, E | 230 V | 50 Hz |
| French Guiana | C, D, E | 220 V | 50 Hz |
| Gaza Strip | C, D, H | 230 V | 50 Hz |
| Gabon | C | 220 V | 50 Hz |

WORLD PLUG & INPUT VOLTAGE GUIDE

| Country | Plug type | Voltage | Hz |
|---------------|------------------|-----------|----------|
| Gambia | G | 230 V | 50 Hz |
| Georgia | C, F | 220 V | 50 Hz |
| Germany | C, F | 230 V | 50 Hz |
| Ghana | D, G | 230 V | 50 Hz |
| Gibraltar | C, G | 240 V | 50 Hz |
| Greece | C, F | 230 V | 50 Hz |
| Greenland | C, E, F, K | 220 V | 50 Hz |
| Grenada | G | 230 V | 50 Hz |
| Guadeloupe | C, D, E | 230 V | 50 Hz |
| Guam | A, B | 110 V | 60 Hz |
| Guatemala | A, B | 120 V | 60 Hz |
| Guinea | C, F, K | 220 V | 50 Hz |
| Guinea-Bissau | C | 220 V | 50 Hz |
| Guyana | A, B, D, G | 240 V | 60 Hz |
| Haiti | A, B | 110 V | 60 Hz |
| Honduras | A, B | 110 V | 60 Hz |
| Hong Kong | D, G | 220 V | 50 Hz |
| Hungary | C, F | 230 V | 50 Hz |
| Iceland | C, F | 230 V | 50 Hz |
| India | C, D, M | 230 V | 50 Hz |
| Indonesia | C, F | 110/220 V | 50 Hz |
| Iran | C, F | 220 V | 50 Hz |
| Iraq | C, D, G | 230 V | 50 Hz |
| Ireland | G | 230 V | 50 Hz |
| Isle of Man | C, G | 230 V | 50 Hz |
| Israel | C, H, M | 230 V | 50 Hz |
| Italy | C, F, L | 230 V | 50 Hz |
| Jamaica | A, B | 110 V | 50 Hz |
| Japan | A, B | 100 V | 50/60 Hz |
| Jordan | B, C, D, F, G, J | 230 V | 50 Hz |
| Kazakhstan | C, F | 220 V | 50 Hz |
| Kenya | G | 240 V | 50 Hz |
| Kiribati | I | 240 V | 50 Hz |
| Korea, North | A, C, F | 110/220 V | 50/60 Hz |
| Korea, South | A, B, C, F | 220 V | 60 Hz |
| Kuwait | C, G, M | 240 V | 50 Hz |
| Kyrgyzstan | C, F | 220 V | 50 Hz |

| Country | Plug type | Voltage | Hz |
|-----------------------|---------------------|-----------|----------|
| Laos | A, B, C, E, F | 230 V | 50 Hz |
| Latvia | C, F | 220 V | 50 Hz |
| Lebanon | A, B, C, D, G | 220 V | 50 Hz |
| Lesotho | M | 220 V | 50 Hz |
| Liberia | A, B, C, E, F | 120/220 V | 50/60 Hz |
| Libya | C, D, F, L | 127/230 V | 50 Hz |
| Lithuania | C, F | 230 V | 50 Hz |
| Liechtenstein | C, J | 230 V | 50 Hz |
| Luxembourg | C, F | 230 V | 50 Hz |
| Macau S.A.R. of China | D, M, G, F | 220 V | 50 Hz |
| Macedonia | C, F | 230 V | 50 Hz |
| Madagascar | C, D, E, J, K | 127/220 V | 50 Hz |
| Madeira | C, F | 230 V | 50 Hz |
| Malawi | G | 230 V | 50 Hz |
| Malaysia | A, C, G, M | 240 V | 50 Hz |
| Maldives | A, C, D, G, J, K, L | 230 V | 50 Hz |
| Mali | C, E | 220 V | 50 Hz |
| Malta | G | 230 V | 50 Hz |
| Martinique | C, D, E | 220 V | 50 Hz |
| Mauritania | C | 220 V | 50 Hz |
| Mexico | A, B | 127 V | 60 Hz |
| Micronesia | A, B | 120 V | 60 Hz |
| Moldova | C, F | 220 V | 50 Hz |
| Monaco | C, D, E, F | 230 V | 50 Hz |
| Mongolia | C, E | 220 V | 50 Hz |
| Montenegro | C, F | 230 V | 50 Hz |
| Montserrat | A, B | 230 V | 60 Hz |
| Morocco | C, E | 120/220 V | 50 Hz |
| Mozambique | C, F, M | 220 V | 50 Hz |
| Myanmar/Burma | C, D, F, G | 230 V | 50 Hz |
| Namibia | D, M | 220 V | 50 Hz |
| Nauru | I | 240 V | 50 Hz |
| Nepal | C, D, M | 230 V | 50 Hz |
| Netherlands | C, F | 230 V | 50 Hz |
| Netherlands Antilles | A, B, C, F | 127/220 V | 50 Hz |
| New Calcedonia | C, F | 220 V | 50 Hz |
| New Zealand | I | 230 V | 50 Hz |

WORLD PLUG & INPUT VOLTAGE GUIDE

| Country | Plug type | Voltage | Hz |
|---------------------|------------------|-----------|-------|
| Nicaragua | A, B | 120 V | 60 Hz |
| Niger | A, B, C, D, E, F | 220 V | 50 Hz |
| Nigeria | D, G | 230 V | 50 Hz |
| Norway | C, F | 230 V | 50 Hz |
| Okinawa | A, B | 120 V | 60 Hz |
| Oman | C, G | 240 V | 50 Hz |
| Pakistan | C, D, M, G | 230 V | 50 Hz |
| Palau | A, B | 120 V | 60 Hz |
| Panama | A, B | 110 V | 60 Hz |
| Papua New Guinea | I | 240 V | 50 Hz |
| Paraguay | C | 220 V | 50 Hz |
| Peru | A, B, C | 220 V | 60 Hz |
| Philippines | A, B, C | 220 V | 60 Hz |
| Poland | C, E | 230 V | 50 Hz |
| Portugal | C, F | 230 V | 50 Hz |
| Puerto Rico | A, B | 120 V | 60 Hz |
| Qatar | D, G | 240 V | 50 Hz |
| Reunion | E | 220 V | 50 Hz |
| Romania | C, F | 230 V | 50 Hz |
| Russian Federation | C, F | 220 V | 50 Hz |
| Rwanda | C, J | 230 V | 50 Hz |
| St. Kitts/Nevis | A, B, D, G | 230 V | 60 Hz |
| St. Lucia | G | 240 V | 50 Hz |
| St. Martin | C, F | 120/220 V | 60 Hz |
| St. Vincent | A, C, E, G, I, K | 230 V | 50 Hz |
| Samoa | I | 230 V | 50 Hz |
| San Marino | C, F, L | 230 V | 50 Hz |
| Sao Tome & Principe | C, F | 220 V | 50 Hz |
| Saudi Arabia | G | 220/230 V | 60 Hz |
| Senegal | C, D, E, K | 230 V | 50 Hz |
| Serbia | C, F | 230 V | 50 Hz |
| Seychelles | G | 240 V | 50 Hz |
| Sierra Leone | D, G | 230 V | 50 Hz |
| Singapore | C, G, M | 230 V | 50 Hz |
| Slovakia | C, E | 230 V | 50 Hz |
| Slovenia | C, F | 230 V | 50 Hz |
| Somalia | C | 220 V | 50 Hz |

| Country | Plug type | Voltage | Hz |
|----------------------|---------------|-----------|-------|
| South Africa | C, M, N | 230 V | 50 Hz |
| Spain | C, F | 230 V | 50 Hz |
| Sri Lanka | D, M, G | 230 V | 50 Hz |
| Sudan | C, D | 230 V | 50 Hz |
| Suriname | C, F | 127 V | 60 Hz |
| Swaziland | M | 230 V | 50 Hz |
| Sweden | C, F | 230 V | 50 Hz |
| Switzerland | C, J | 230 V | 50 Hz |
| Syria | C, E, L | 220 V | 50 Hz |
| Tahiti | A, B, E | 110/220 V | 60 Hz |
| Taiwan | A, B | 110 V | 60 Hz |
| Tanzania | D, G | 230 V | 50 Hz |
| Thailand | A, B, C, F, O | 220 V | 50 Hz |
| Timor-Leste | C, E, F, I | 220 V | 50 Hz |
| Togo | C | 220 V | 50 Hz |
| Tonga | I | 240 V | 50 Hz |
| Trinidad & Tobago | A, B | 115 V | 60 Hz |
| Tunisia | C, E | 230 V | 50 Hz |
| Turkey | C, F | 230 V | 50 Hz |
| Turkmenistan | B, C, F | 220 V | 50 Hz |
| Turks & Caicos | A, B | 120 V | 60 Hz |
| Tuvalu | I | 220 V | 50 Hz |
| Uganda | G | 240 V | 50 Hz |
| Ukraine | C, F | 220 V | 50 Hz |
| United Arab Emirates | D, G | 220 V | 50 Hz |
| United Kingdom | G | 230 V | 50 Hz |
| United States | A, B | 120 V | 60 Hz |
| US Virgin Islands | A, B | 110 V | 60 Hz |
| Uruguay | C, F, I, L | 230 V | 50 Hz |
| Uzbekistan | C, I | 220 V | 50 Hz |
| Vanuatu | C, G, I | 220 V | 50 Hz |
| Venezuela | A, B | 120 V | 60 Hz |
| Vietnam | A, C, F | 220 V | 50 Hz |
| Virgin Islands | A, B | 110 V | 60 Hz |
| Yemen | A, D, G | 230 V | 50 Hz |
| Zambia | C, D, G | 230 V | 50 Hz |
| Zimbabwe | D, G | 220 V | 50 Hz |