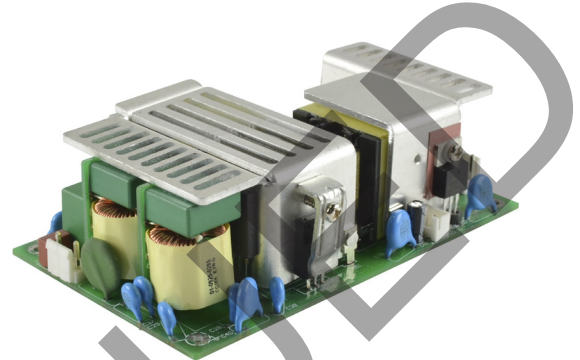


SERIES: VOF-185 | **DESCRIPTION:** AC-DC POWER SUPPLY**FEATURES**

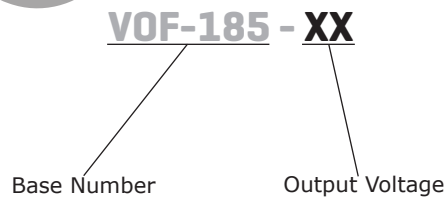
- up to 185 W continuous power
- universal input voltage range
- industry standard 3" x 5" footprint
- power factor correction
- low no load power consumption
- over voltage, over current, and short circuit protections
- output trim
- UL/cUL and TUV safety approvals
- efficiency up to 85%



| MODEL | output voltage | output current max | output power ¹ max | ripple and noise ² max | efficiency ³ typ |
|------------|----------------|--------------------|-------------------------------|-----------------------------------|-----------------------------|
| | (Vdc) | (A) | (W) | (mVp-p) | (%) |
| VOF-185-12 | 12 | 15.42 | 185 | 120 | 85 |
| VOF-185-15 | 15 | 12.33 | 185 | 150 | 85 |
| VOF-185-24 | 24 | 7.71 | 185 | 240 | 85 |
| VOF-185-36 | 36 | 5.14 | 185 | 360 | 85 |
| VOF-185-48 | 48 | 3.85 | 185 | 480 | 85 |

Notes:

1. Maximum output power of 185 W with forced air cooling (8.48 CFM), 111 W with convection cooling.
2. At full load, nominal input, 20 MHz bandwidth oscilloscope, using a 12" twisted pair wire terminated together with a 0.1 μ F and 47 μ F capacitor.
3. At full load, 230 Vac input, without external fan.
4. All specifications are measured at $T_a=25^\circ\text{C}$, 230 Vac input voltage, and rated output load unless otherwise specified.

PART NUMBER KEY

INPUT

| parameter | conditions/description | min | typ | max | units |
|---------------------------|--|-----|------------|-----|--------|
| voltage | | 90 | | 277 | Vac |
| frequency | | 47 | | 63 | Hz |
| current | at 115 Vac, full load at 230 Vac, full load | | 2.3 1.2 | | A A |
| inrush current | at 230 Vac, cold start | | | 80 | A |
| leakage current | at 264 Vac | | | 3.5 | mA |
| power factor correction | at 230 Vac, full load | 0.9 | | | |
| no load power consumption | at 230 Vac | | | 0.5 | W |
| input fuse | 6.3 A / 250 V time delay fuse (included) | | | | |

OUTPUT

| parameter | conditions/description | min | typ | max | units |
|----------------------------|------------------------|-----|-------|-----|-------|
| initial set point accuracy | | | ±3 | | % |
| line regulation | | | ±0.5 | | % |
| load regulation | from 100%~10% load | | ±2 | | % |
| transient response | 1 kHz, 100%~10% load | | | | |
| | VOF-185-12 | | 1,200 | | mVp-p |
| | VOF-185-15 | | 1,500 | | mVp-p |
| | VOF-185-24 | | 2,400 | | mVp-p |
| | VOF-185-36 | | 3,600 | | mVp-p |
| start-up delay time | at 115 Vac | | 3 | | s |
| | at 230 Vac | | 2.5 | | s |
| start-up rise time | at 115 Vac, full load | | 50 | | ms |
| hold-up time | at 115 Vac, full load | 10 | | | ms |
| adjustability | built in trim pot | | ±5 | | % |
| switching frequency | | 30 | | 300 | kHz |
| temperature coefficient | at 0~50°C | | ±0.03 | | %/°C |
| fan output | 12 Vdc / 100 mA | | | | |

PROTECTIONS

| parameter | conditions/description | min | typ | max | units |
|--------------------------|------------------------|-----|-----|-----|-------|
| over voltage protection | clamped by TVS | | | | |
| over current protection | hiccup, auto recovery | 105 | | | % |
| short circuit protection | hiccup, auto recovery | 105 | | | % |

SAFETY & COMPLIANCE

| parameter | conditions/description | min | typ | max | units |
|----------------------|---|-----|-------|-----|-------|
| isolation voltage | input to output | | 3,000 | | Vac |
| | input to ground | | 1,500 | | Vac |
| | output to ground | | 500 | | Vac |
| safety approvals | UL 60950-1, EN 60950-1, IEC 60950-1 | | | | |
| EMI/EMC ¹ | EN 55022: 2010 Class B, EN 61204-3:2000, EN 61000-6-3: 2007 +A1: 2011, EN 61000-3-2: 2006 +A2: 2009, EN 61000-3-3: 2008, EN 55024: 2010, EN 61000-6-1: 2007, ENV 50204: 1995, CE, FCC | | | | |

Notes: 1. The power supply is considered a component which will be installed into final equipment. The final equipment still must be tested to meet the necessary EMC directives.

SAFETY & COMPLIANCE (CONTINUED)

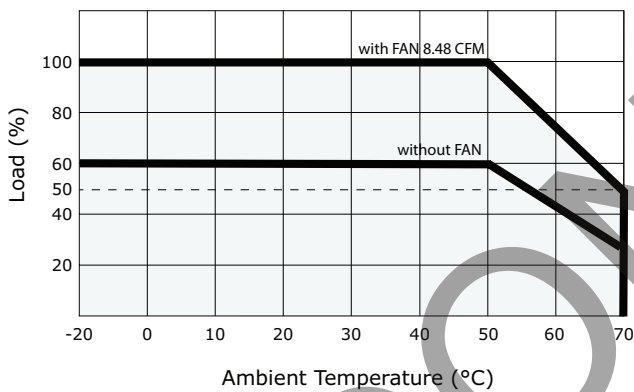
| parameter | conditions/description | min | typ | max | units |
|-----------|------------------------|---------|-----|-----|-------|
| class | class I | | | | |
| MTBF | as per MIL-HDBK-217F | 250,000 | | | hours |
| RoHS | 2011/65/EU | | | | |

ENVIRONMENTAL

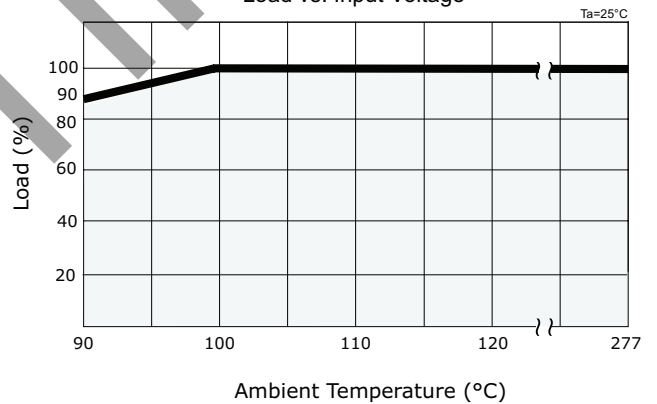
| parameter | conditions/description | min | typ | max | units |
|-----------------------|--|-----|------|-----|-------|
| operating temperature | see derating curves | -20 | | 70 | °C |
| storage temperature | | -40 | | 85 | °C |
| operating humidity | non-condensing | 20 | | 90 | % |
| storage humidity | non-condensing | 20 | | 90 | % |
| operating altitude | | | 5000 | | m |
| vibration & shock | 10~3000Hz, 10 minutes per cycle, for 1 hour along each of the X, Y, and Z axes | | 2 | | G |

DERATING CURVES

Temperature Derating Curve
Load vs. Temperature

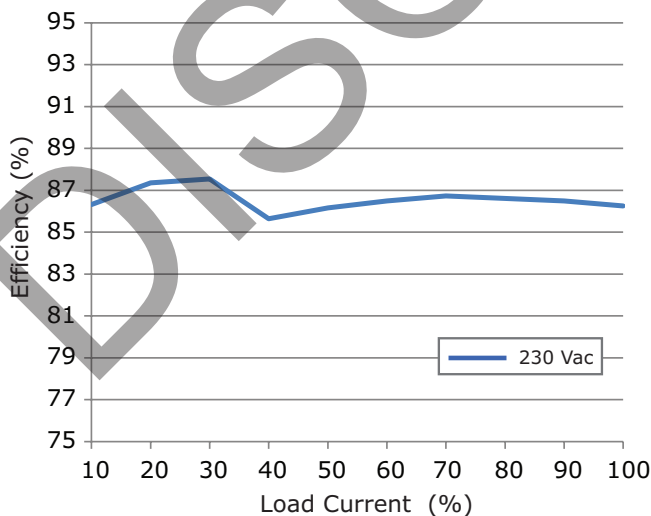


Temperature Derating Curve
Load vs. Input Voltage

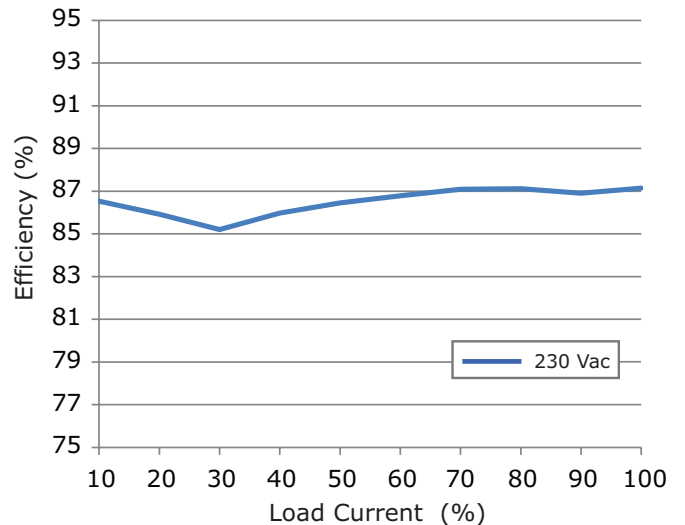


EFFICIENCY CURVES

VOF-185-12 Efficiency Curve
(Efficiency vs. Load Current at 230 Vac)

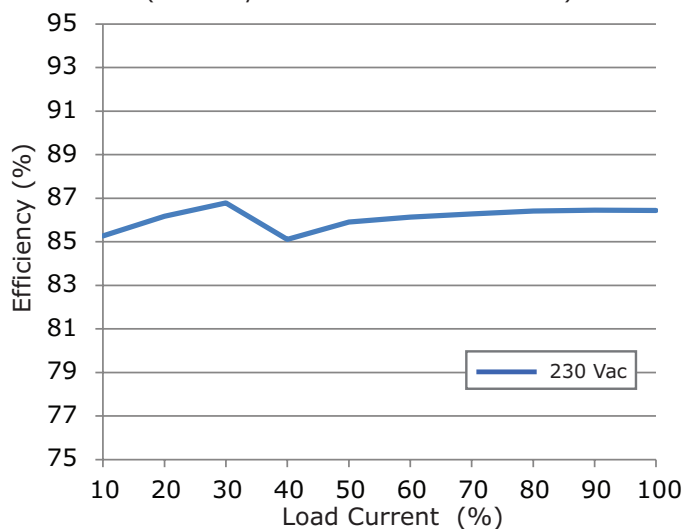


VOF-185-15 Efficiency Curve
(Efficiency vs. Load Current at 230 Vac)

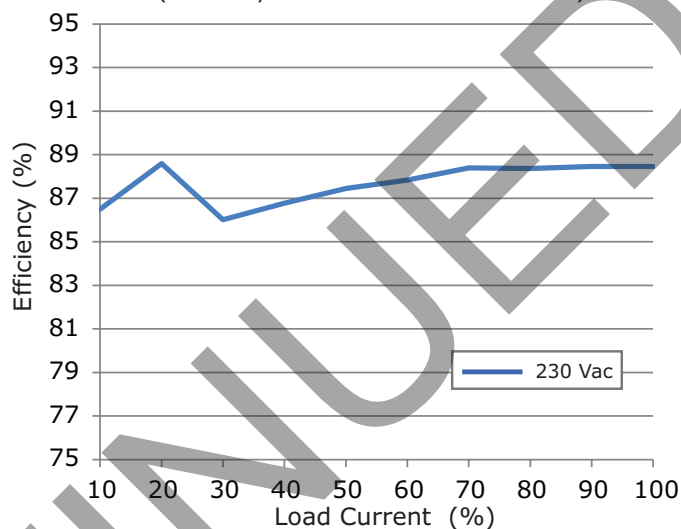


EFFICIENCY CURVES (CONTINUED)

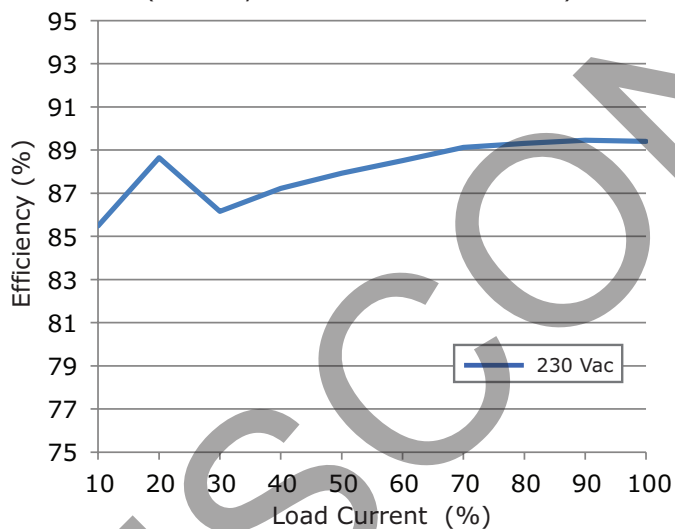
VOF-185-24 Efficiency Curve
(Efficiency vs. Load Current at 230 Vac)



VOF-185-36 Efficiency Curve
(Efficiency vs. Load Current at 230 Vac)



VOF-185-48 Efficiency Curve
(Efficiency vs. Load Current at 230 Vac)



MECHANICAL

| parameter | conditions/description | min | typ | max | units |
|------------------------|--|-----|------|-----|-------|
| dimensions | 127 x 76.2 x 39.6 | | | | mm |
| weight | | | 0.36 | | kg |
| cooling | external fan | | | | |
| AC input | CN1 mates with Molex 09-50-7031 housing with Molex 2478 series crimp contact or equivalent | | | | |
| DC output | CN2 mates with Molex 09-50-7101 housing with Molex 2478 series crimp contact or equivalent | | | | |
| Auxiliary (Fan) output | Fan mates with JST XHP-2 housing with JST SXH-001T-P0.6 contact or equivalent | | | | |

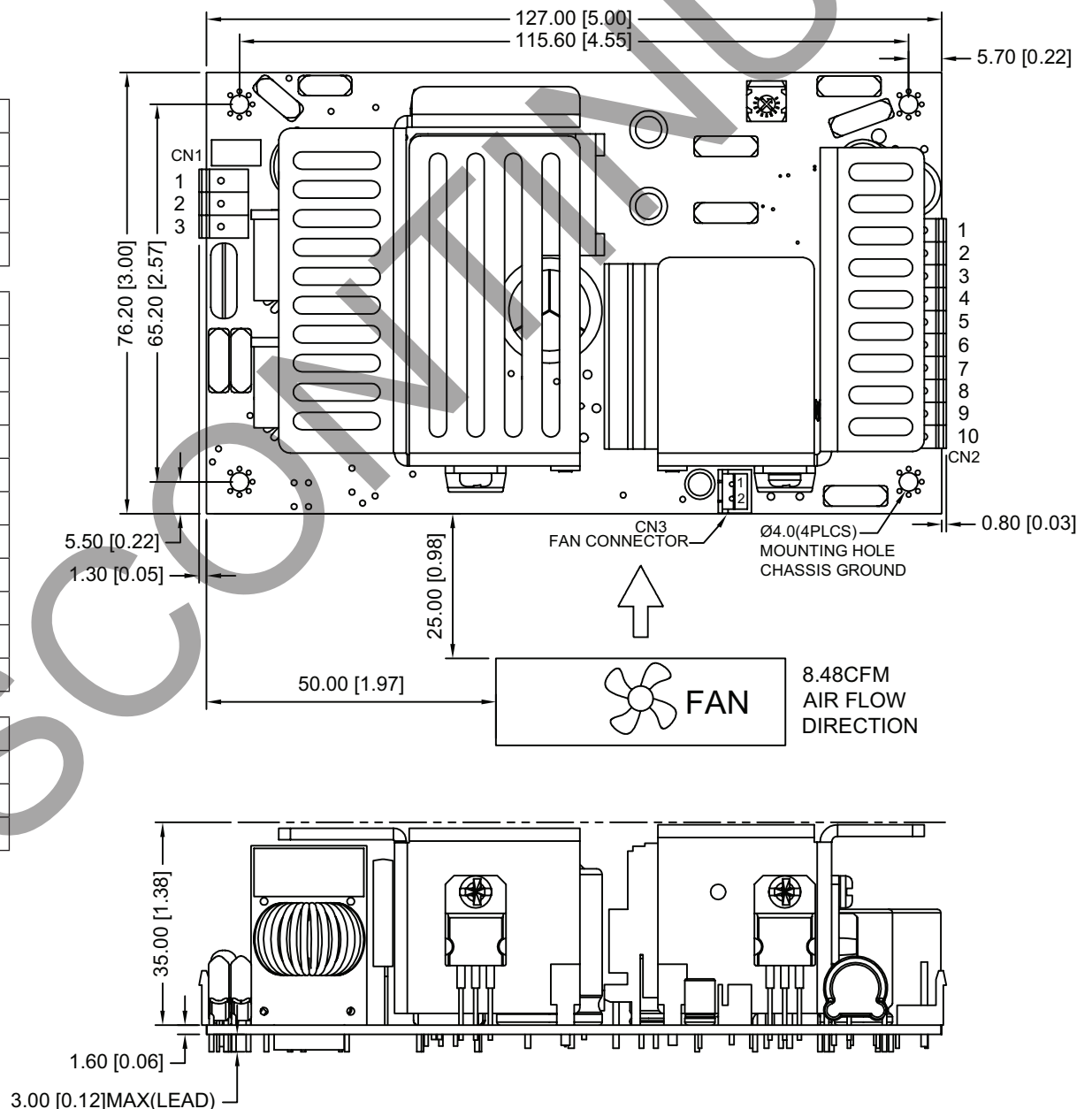
MECHANICAL DRAWING

units: mm [inch]
tolerance: ±0.3 mm

| CN1 | |
|-----|----------|
| PIN | Function |
| 1 | L |
| 2 | NP |
| 3 | N |

| CN2 | |
|-----|----------|
| PIN | Function |
| 1 | +Vo |
| 2 | +Vo |
| 3 | +Vo |
| 4 | +Vo |
| 5 | +Vo |
| 6 | -Vo |
| 7 | -Vo |
| 8 | -Vo |
| 9 | -Vo |
| 10 | -Vo |

| CN3 (FAN) | |
|-----------|----------|
| PIN | Function |
| 1 | +FAN |
| 2 | -FAN |



REVISION HISTORY

| rev. | description | date |
|------|-------------------------|------------|
| 1.0 | initial release | 06/27/2016 |
| 1.01 | added efficiency curves | 09/27/2016 |
| 1.02 | company logo updated | 11/30/2020 |

The revision history provided is for informational purposes only and is believed to be accurate.



CUI INC

a bel group

Headquarters
20050 SW 112th Ave.
Tualatin, OR 97062
800.275.4899

Fax 503.612.2383
cui.com
techsupport@cui.com

CUI offers a two (2) year limited warranty. Complete warranty information is listed on our website.

CUI reserves the right to make changes to the product at any time without notice. Information provided by CUI is believed to be accurate and reliable. However, no responsibility is assumed by CUI for its use, nor for any infringements of patents or other rights of third parties which may result from its use.

CUI products are not authorized or warranted for use as critical components in equipment that requires an extremely high level of reliability. A critical component is any component of a life support device or system whose failure to perform can be reasonably expected to cause the failure of the life support device or system, or to affect its safety or effectiveness.