

# AMT 102 & 103

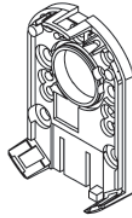
## STEP BY STEP INSTRUCTIONS FOR THE AMT 102V and 103V



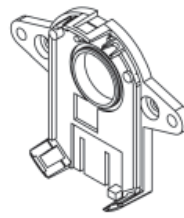
AMT 102V and 103V comes with all items shown:



Top Cover



Base



Wide Base  
(with 102V only)



Tool A



Shaft Adaptor



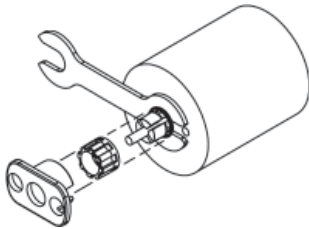
Tool B



Sleeve

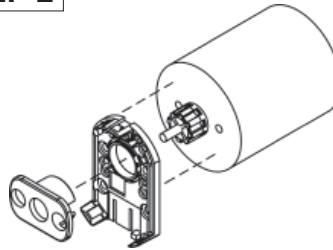
Sleeve Sizes:  
2mm= Light Blue, 3mm= Orange, 1/8 inch(3.175mm)= Purple  
4mm= Gray, 3/16 inch (4.76mm)= Yellow, 5mm= Green  
6mm= Red, 1/4 inch (6.35mm)= White, 8mm = Blue

### STEP 1



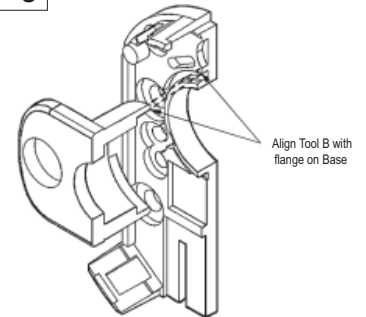
1. Insert Tool A as a spacer that defines the distance to the mounting surface.
2. Slide appropriate sized Sleeve over shaft all the way down to Tool A.
3. Slide Shaft Adaptor over Sleeve.
4. Use Tool B to press Shaft Adaptor over Sleeve until flush with Tool A.

### STEP 2



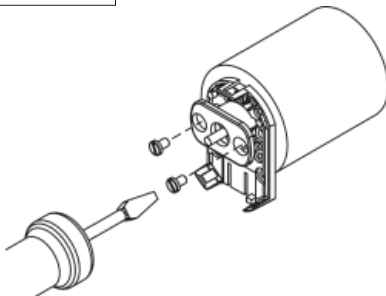
5. Remove Tools A and B.
6. Place Base on motor, with Tool B used as a centering tool.

### STEP 3



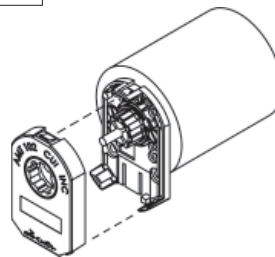
- 6a. Align Tool B with flange on Base.
- 6b. Slide Base and Tool B onto motor, centering onto the Shaft Adapter.

### STEP 4



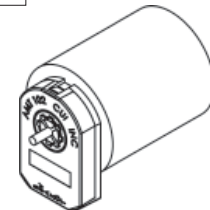
7. Fasten the Base on the motor.
8. Remove Tool B.

### STEP 5



9. Slide the Top Cover onto the Base, carefully observing that the teeth of the Shaft Adaptor align with the grooves in the hub.

### STEP 6



10. Make sure the snaps are fully engaged and the Top Cover is flush with the Base.
11. When assembly is finished, the Shaft Adaptor should be about flush with the front of the Encoder and the Motor Shaft should rotate freely.

For additional instructions or information contact:  
Quality Control at CUI INC  
800.275.4899

Animated assembly instructions  
[www.amtencoder.com](http://www.amtencoder.com)

Complete specifications  
[www.amtencoder.com](http://www.amtencoder.com)

CUI INC's products are not intended for applications where a failure could result in costly, dangerous, or life threatening situations. CUI INC will not be responsible for damages, or losses greater than the cost of the CUI INC replacement parts.



CUI Inc., 9615 SW Allen Blvd., Suite. 103, Beaverton, OR  
97005 Fax: 503.643.6129 Phone 800.275.4899