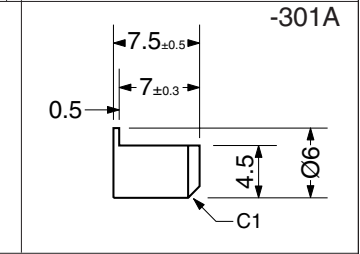
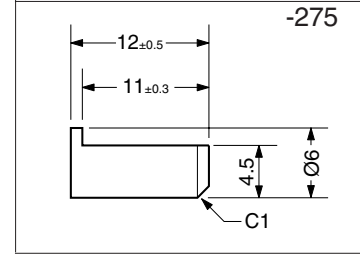
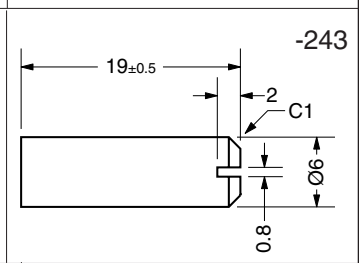
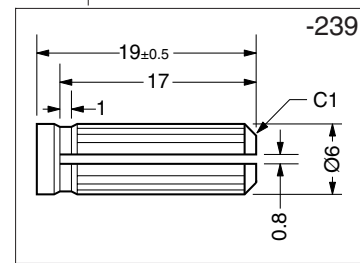
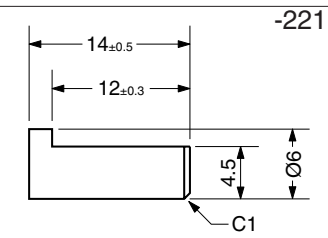
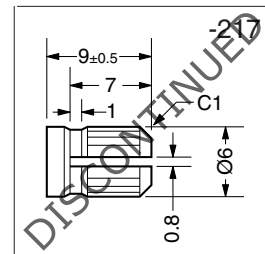
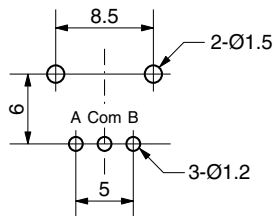


PCB Layout



SPECIFICATIONS

ELECTRICAL

1. Voltage Rating: 10 VDC
2. Current Rating: 1.0 mA (2.5 mA max)
3. Resolution: 20PPR
4. Insulation Resistance: 500 VDC, 100M
5. Contact Resistance: 1Ω max.

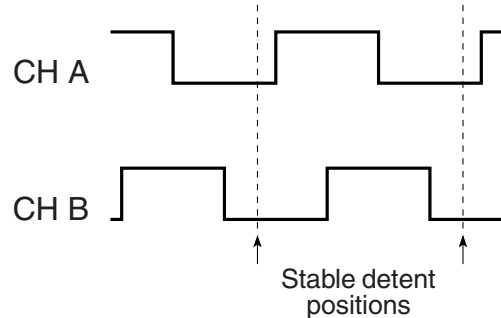
MECHANICAL

1. Detent Positions: 20
2. Rotational Torque: 30-200 gf cm
3. Axial Load: 10kgf
4. Rotational Life: 100,000 cycles

ENVIRONMENTAL

1. Operating Temp: -10° to +60° C
2. Storage Temp: -40° to +75° C
3. Humidity: 85% RH
4. Vibration: 10 - 55 Hz, 0.75 mm, 2 hrs

OUTPUT WAVEFORM

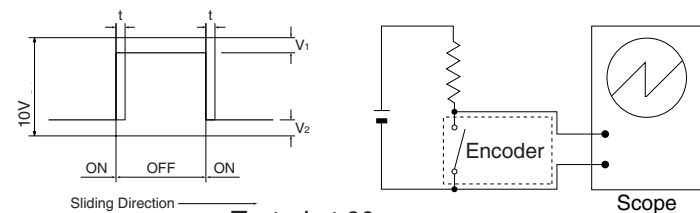


ORDERING INSTRUCTIONS
EC09P20V-XXX

Insert suffix to specify shaft type

SLIDING NOISE

$t = 5\text{mS}$ = Masking time to avoid chatter
 $V_1 = V_2 = 2\text{V max.}$



Tested at 60 rpm



CUI Inc.
20050 SW 112th Ave.
Tualatin, OR 97062
Tel: 503/612-2300 FAX: 503/612-2383

DRAWN BY JRH	UPDATED 01/23/08	CHECKED 01/23/08	UNIT MM
PART NO. EC09P20V-XXX			REV. A