

**PART NUMBER:** EC252AB**DESCRIPTION:** rotary encoder**ELECTRICAL SPECIFICATIONS**

output waveform	Square wave
output signals	A, B phase
current consumption	20 mA max.
output voltage	“H” “L”
	V <sub>cc</sub> ~ 0.5 V min. 0.7 V max.
output current	-0.1 mA max.
supply voltage	3.3 V dc ± 5%
output resolution (ppr)	50
frequency response	100 Hz

**MECHANICAL SPECIFICATIONS**

max shaft load, radial:	1 kgf
axial:	1 kgf
starting torque	0.4 ±0.2 N·cm max. (41 ±20 gf·cm max.)
rotational angle	360° continuous
maximum speed	120 RPM
rotational life	1,000,000 cycles
weight	20 g

**ENVIRONMENTAL SPECIFICATIONS**

operating temp	0° to +60° C
storage temp	-20° to +80° C
humidity	85% RH, no condensation
vibration	10 ~ 55 Hz. 1.5 mm, 2 hours
shock	50 G, 6 ms, 3 axes, 3 reps

**ORDERING INSTRUCTIONS**

# EC252X050X

Detent:

A = Without detent  
B = With detent

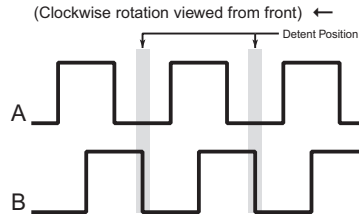
Termination options:

A = Solder holes  
B = Connector  
C = Cable  
D = PC board mount

**PART NUMBER:** EC252AB

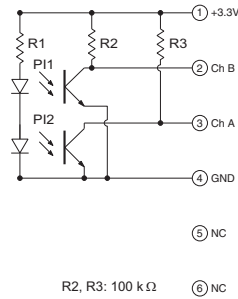
**DESCRIPTION:** rotary encoder

### OUTPUT WAVEFORM

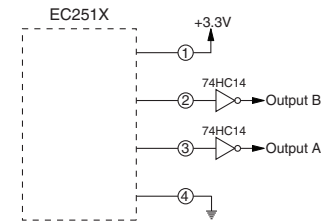


### OUTPUT CIRCUIT

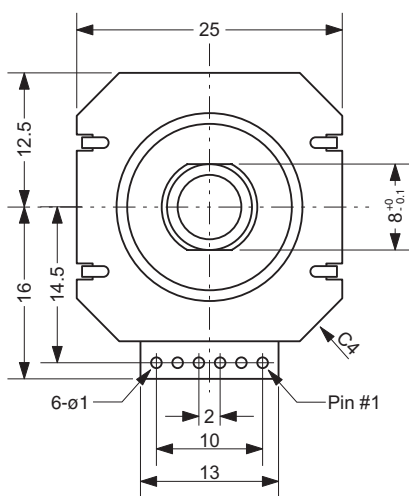
INTERNAL CIRCUIT



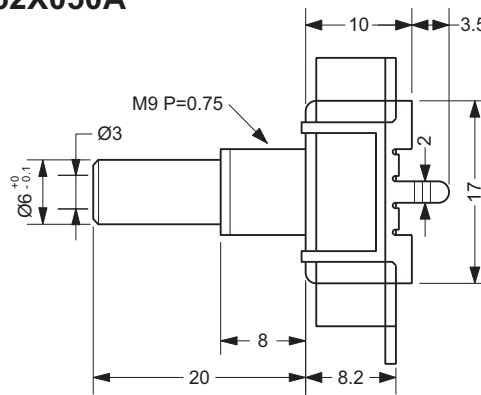
EXTERNAL CIRCUIT



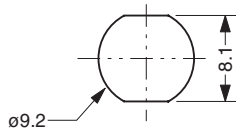
### MECHANICAL DRAWING



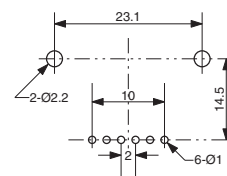
**EC252X050A**



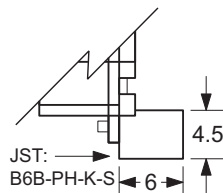
Mounting Hole Dimensions



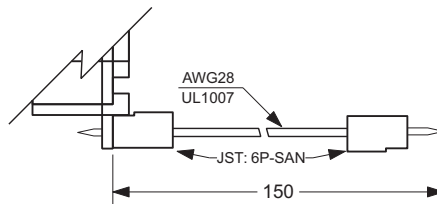
PCB Footprint



**EC252X050B**



**EC252X050C**



**EC252X050D**

