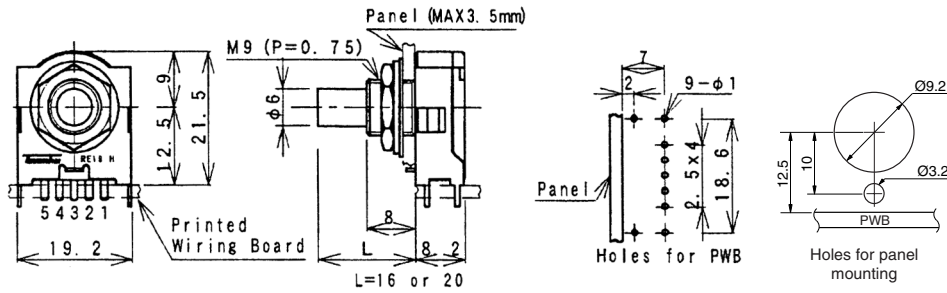
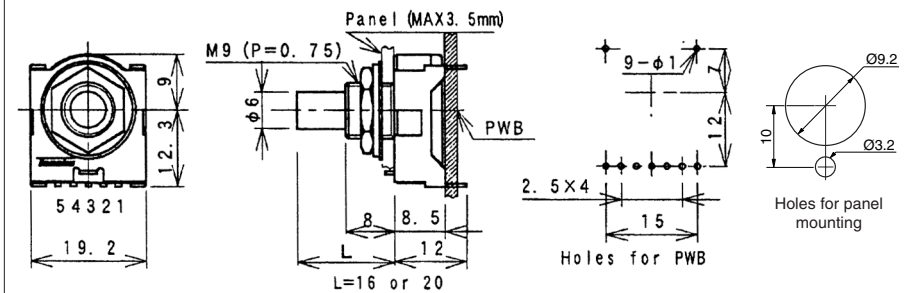


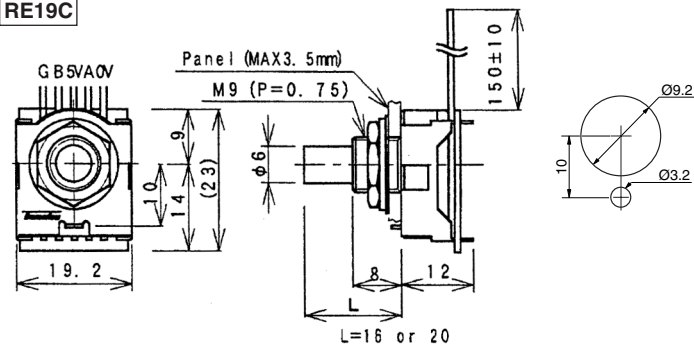
RE19H



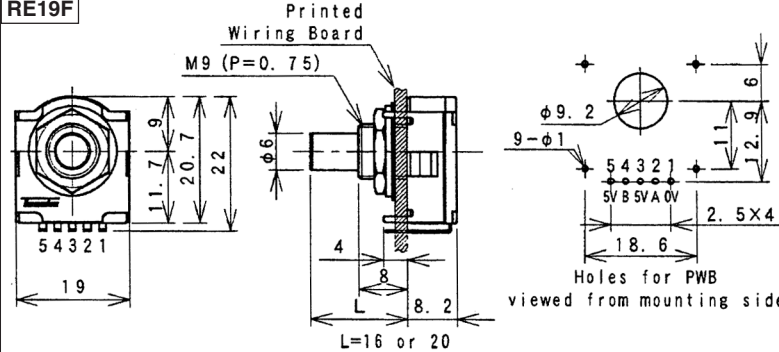
RE19V



RE19C



RE19F



Connections

Number	Functions
5*	5V +5V Powersupply
4	B B Phase output
3*	5V +5V Powersupply
2	A A Phase output
1	0V 0V Common Return
G	Frame Ground/Earth

*Please connect terminals 3 and 5 to 5V power supply.

SPECIFICATIONS

ELECTRICAL

1. Input Power: 5.0 VDC ±10% @ 20mA
2. Output Voltage: H = Vcc - 0.5V
L ≤ 0.4V
3. Resolution: 25/50 PPR
3. Output Type: TTL Compatible
4. Max. Freq. Response: 500 Hz

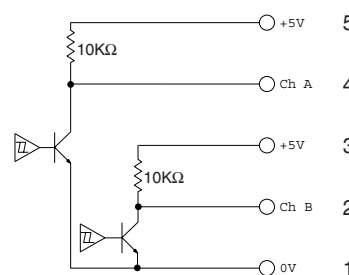
MECHANICAL

1. Max Shaft Load, radial: 5.0 kgf
axial: 5.0 kgf
2. Rotational Angle: 360° continuous
3. Click Torque: 30~70 gf•cm
4. Rotational Life: 1,000,000 cycles

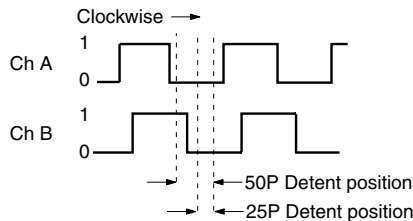
ENVIRONMENTAL

1. Operating Temp: 0° to +70° C
2. Storage Temp: -20° to +80° C
3. Humidity: ≤85% RH, no condensation
4. Vibration: 10~55 Hz, 1.5 mm, 2 hrs
5. Shock: 50G, 6ms, 3 axes, 3 reps

OUTPUT CIRCUIT



OUTPUT WAVEFORM



ORDERING INSTRUCTIONS

RE19□□□□□□□□R□

N = Not waterproof
P = Waterproof

Body Type:
C = Cable type
F = Front mounting
H = Horizontal
V = Vertical

Shaft Length:
16 = 16mm
20 = 20mm
28 = 28mm

Detent:
C = Click
Blank = No Click

Resolution:
25 = 25 Cycles
50 = 50 Cycles

Output:
O = Open Collector
R = pull up 4.7 kΩ



CUI, Inc.
20050 SW 112th Ave
Tualatin, OR 97062
Tel: 503/612-2300 FAX: 503/612-2383

DRAWN BY JRH	UPDATED 03/30/07	CHECKED 03/30/07	RELEASED
PART NO. RE19XXXXXXXXRX			REV.