

SPECIFICATIONS

ELECTRICAL

1. Input Power: 3.3 or 5.0 VDC $\pm 10\%$
2. Output Voltage: $H = V_{cc} - 0.5V$
 $L \leq 0.5V$
3. Resolution: 16 PPR, 25 PPR
4. Output Type: TTL Compatible
5. Max. Freq. Response: 500 Hz

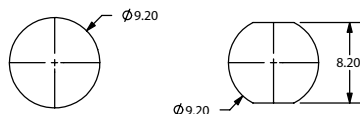
MECHANICAL

1. Max Shaft Load, radial: 5.0 kgf
axial: 5.0 kgf
2. Rotational Angle: 360° continuous
3. Click Torque: 30~70 gf*cm
4. Rotational Life: 1,000,000 cycles

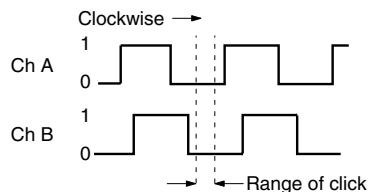
ENVIRONMENTAL

1. Operating Temp: 0° to +60° C
2. Storage Temp: -20° to +80° C
3. Humidity: $\leq 85\%$ RH, no condensation
4. Vibration: 10~55 Hz, 1.5 mm, 2 hrs
5. Shock: 50G, 6ms, 3 axes, 3 reps

HOLE LAYOUT



OUTPUT WAVEFORM



ORDERING INSTRUCTIONS

RE24N C16/24F

Termination Options:
C = Cable Type
F = Front Mount
S = Solder Holes
V = Vertical Mount

Detent:
C = Click

Input Voltage:
A = 5VDC $\pm 10\%$
B = 3.3VDC $\pm 10\%$

Resolution:
16 = 16 PPR
25 = 25 PPR



CUI, Inc.
20050 SW 112th Ave
Tualatin, OR 97062
Tel: 503/612-2300 FAX: 503/612-2383

DRAWN BY AJR	UPDATED 05/22/07	CHECKED 05/22/07	RELEASED
-----------------	---------------------	---------------------	----------

PART NO. RE24NXXXC16/24FX	REV. A
-------------------------------------	------------------