



PART NUMBER: SEH17

DESCRIPTION: sine wave encoder

ELECTRICAL SPECIFICATIONS

output waveform	Sine Wave
output signals	A phase, A,B phase
current consumption	≤30 mA
frequency response	0~20 KHz
output phase difference	A, B phase difference 90° ± 45°
supply voltage	5 V dc ± 10%
output resolution (ppr)	100, 200, 300, (360) (single phase only)

MECHANICAL SPECIFICATIONS

max shaft load, radial:	1.9Nm (200gf) (2); 4.9Nm (500gf) (4)
axial:	1.9Nm (200gf) (2); 4.9Nm (500gf) (4)
starting torque	0.3 x 10 ⁻³ N·m (3 gf·cm)
max rotational speed	6000 RPM
shock resistance	500m/s ² (50G), 11ms, 3 times each on XYZ
vibration proof	55 Hz, 1.5mm, 2 hours each on XYZ
weight	20g (with 130mm cable)
cable	Vinyl wire (AWG28) 130mm

ENVIRONMENTAL SPECIFICATIONS

operatingtemp	0° to +50° C
storage temp	-20° to +80° C
humidity	90% max. non collecting

ORDERING INSTRUCTIONS

SEH17 - XXXXX

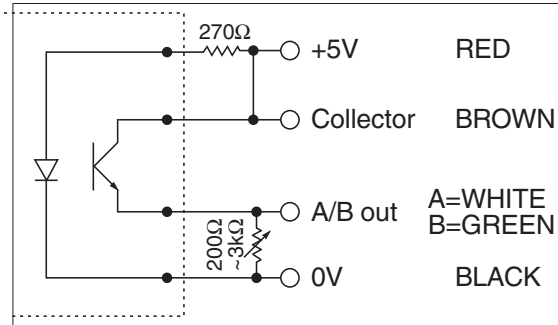
Resolution (PPR):	Output Phase:
100 = 100 PPR	A = Single Phase
200 = 200 PPR	AB = Two-Phase
300 = 300 PPR	
360 = 360 PPR	



PART NUMBER: SEH-17

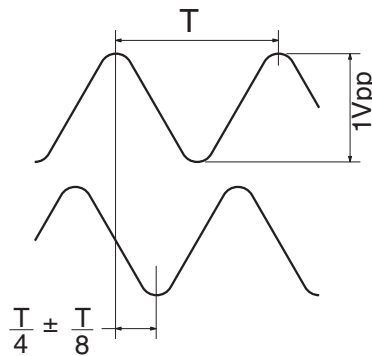
DESCRIPTION: sine wave encoder

CIRCUIT CONNECTIONS

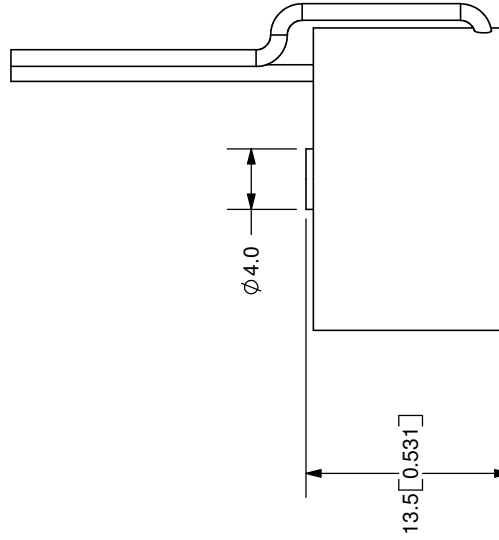
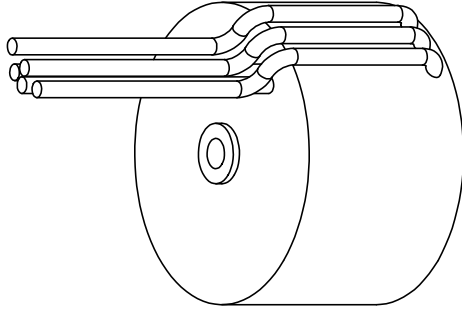
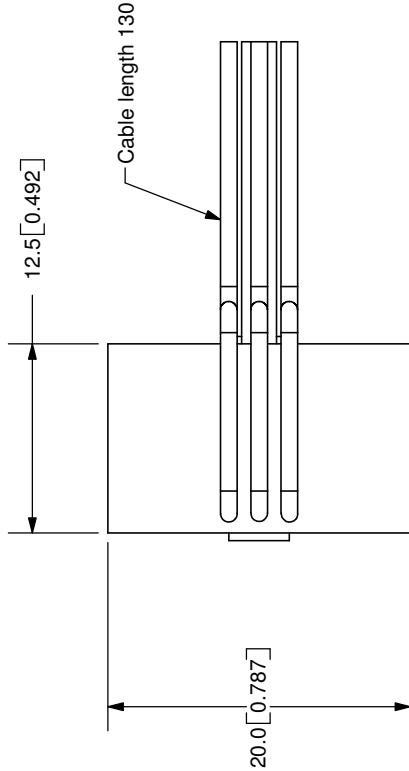


OUTPUT WAVEFORM

Clockwise rotation viewed from front



REV.	DESCRIPTION	DATE
A	NEW DRAWING	7/27/2007



TOLERANCE:
±0.3mm UNLESS OTHERWISE
SPECIFIED



CUI INC

20050 SW 112th Ave.
Tualatin, OR 97062
Phone: 503-612-2300
800-275-4899
Fax: 503-612-2383
Website: www.cui.com

TITLE: Incremental Encoder REV: A

PART NO: SEH 17 hollow shaft UNITS: MM [INCHES]

DRAWN BY: JMS APPROVED BY: SCALE: 2:1

PC FILE NAME: SEH 17 hollow shaft	COPYRIGHT 2007 BY CUI INC.	Cable Color Output Type	Red Anode	Brown Collector	White Emitter A	Green Emitter B	Black Cathode	-	-	-	-
--------------------------------------	-------------------------------	----------------------------	--------------	--------------------	--------------------	--------------------	------------------	---	---	---	---