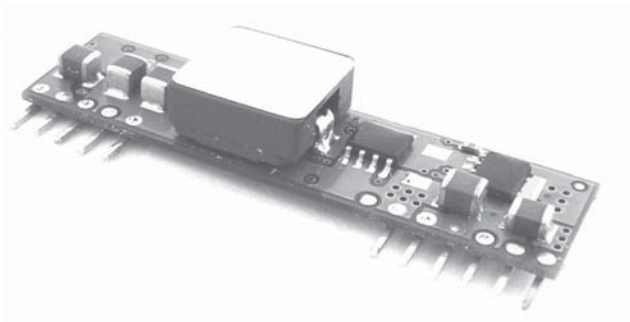


PART NUMBER: VPOL10A-12W-SIP

DESCRIPTION: point of load converter

features

- * industry standard pin out
- * high efficiency to 90%
- * 300 KHz switching frequency
- * 6.0-14 VDC wide input range
- * 0.75-5.0 VDC wide output range
- * over temperature protection
- * continuous short circuit protection
- * remote on/off
- * cost-efficient open frame design
- * UL/C-UL60950 certified
- * output voltage sequencing (tracking)
- * power good signal



1. INTRODUCTION

2. VPOL10A-12W-SIP CONVERTER FEATURES

3. GENERAL DESCRIPTION

3.1 Electrical Description

3.2 Thermal Packaging and Physical Design.

4. TECHNICAL SPECIFICATIONS

5. MAIN FEATURES AND FUNCTIONS

5.1 Operating Temperature Range

5.2 Over-Temperature Protection (OTP)

5.3 Output Voltage Adjustment

5.4 Safe Operating Area (SOA)

5.5 Over Current Protection

5.6 Remote ON/OFF

5.7 UVLO (Under-Voltage Lockout)

5.8 Output Voltage Sequencing (Tracking)

6. SAFETY

6.1 Input Fusing and Safety Considerations.

7. APPLICATIONS

7.1 Layout Design Challenges.

7.2 Convection Requirements for Cooling

7.3 Thermal Considerations

7.4 Power De-Rating Curves

7.5 Efficiency vs Load Curves

7.6 Input Capacitance at the Power Module

7.7 Test Set-Up

7.8 Remote Sense Compensation

7.9 VPOL10A-12W-SIP Series Output Voltage Adjustment.

7.10 Output Ripple and Noise Measurement

7.11 Output Capacitance

8. MECHANICAL OUTLINE DIAGRAMS

8.1 VPOL10A-12W-SIP Mechanical Outline Diagrams

PART NUMBER: VPOL10A-12W-SIP**DESCRIPTION:** point of load converter

1. Introduction

This application note describes the features and functions of CUI INC's VPOL10A-12W-SIP series of Non Isolated DC-DC Converters. These are highly efficient, reliable and compact, high power density, single output DC/DC converters. These "Point of Load" modules serve the needs specifically of the fixed and mobile telecommunications and computing market, employing economical distributed Power Architectures. The VPOL10A-12W-SIP series provide precisely regulated output voltage range from 0.7525V to 5.0Vdc over a wide range of input voltage ($V_i=6.0 - 14\text{Vdc}$) and can operate over an ambient temperature range of -40°C to $+85^\circ\text{C}$. Ultra-high efficiency operation is achieved through the use of synchronous rectification and drive control techniques.

The modules are fully protected against short circuit and over-temperature conditions. CUI INC's world class automated manufacturing methods, together with an extensive testing and qualification program, ensure that all VPOL10A-12W-SIP series converters are extremely reliable.

2. VPOL10A-12W-SIP Converter Features

- High efficiency topology, typically 95% at 5.0Vdc
- Industry standard footprint
- Wide ambient temperature range, -40C to $+85\text{C}$
- Cost efficient open frame design
- Programmable output voltage via external resistor from 0.7525 to 5.0Vdc
- No minimum load requirement (Stable at all loads)
- Remote ON/OFF
- Remote sense compensation
- Fixed switching frequency
- Continuous short-circuit protection and over current protection
- Over-temperature protection (OTP)
- Monotonic Startup with pre-bias at the output.
- UL/IEC/EN60950 Certified.
- Output Voltage Sequencing(Tracking)
- Power Good Signal (Option)

3. General Description

3.1 Electrical Description

A block diagram of the VPOL10A-12W-SIP Series converter is shown in Figure 1. Extremely high efficiency power conversion is achieved through the use of synchronous rectification and drive techniques. Essentially, the powerful VPOL10A-12W-SIP series topology is based on a non-isolated synchronous buck converter. The control loop is optimized for unconditional stability, fast transient response and a very tight line and load regulation. In a typical pre-bias application the VPOL10A-12W-SIP series converters do not draw any reverse current at start-up. The output voltage can be adjusted from 0.7525 to 5.0vdc, using the TRIM pin with a external resistor. The converter can be shut down via a remote ON/OFF input that is referenced to ground. This input is compatible with popular logic devices; a 'positive' logic input is supplied as standard.

Positive logic implies that the converter is enabled if the remote ON/OFF input is high (or floating), and disabled if it is low. The

converter is also protected against over-temperature conditions. If the converter is overloaded or the ambient temperature gets too high, the converter will shut down to protect the unit.

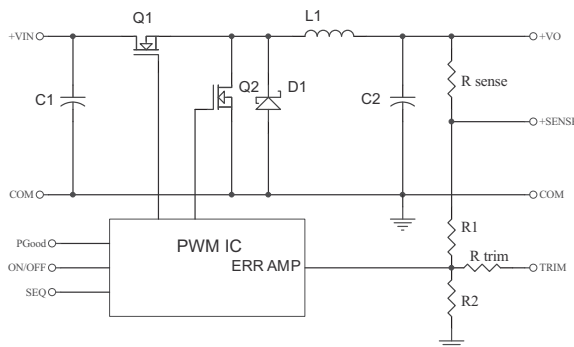


Figure 1. Electrical Block Diagram

3.2 Thermal Packaging and Physical Design.

The VPOL10A-12W-SIP series uses a multi-layer FR4 PCB construction. All surface mount power components are placed on one side of the PCB, and all low-power control components are placed on the other side. Thus, the Heat dissipation of the power components is optimized, ensuring that control components are not thermally stressed. The converter is an open-frame product and has no case or case pin. The open-frame design has several advantages over encapsulated closed devices. Among these advantages are:

Efficient Thermal Management: the heat is removed from the heat generating components without heating more sensitive, small signal control components.

Environmental: Lead free open-frame converters are more easily re-cycled.

Cost Efficient: No encapsulation. Cost efficient open-frame construction.

Reliable: Efficient cooling provided by open frame construction offers high reliability and easy diagnostics.

**PART NUMBER:** VPOL10A-12W-SIP**DESCRIPTION:** point of load converter

4. Technical Specifications

(All specifications are typical at nominal input, full load at 25°C unless otherwise noted.)

| PARAMETER | NOTES and CONDITIONS | Device | Min. | Typical | Max. | Units |
|---|---|------------|------------|--|------------|------------------|
| ABSOLUTE MAXIMUM RATINGS | | | | | | |
| Input Voltage Continuous | ALL | | 0 | | 16 | Vdc |
| Operating Temperature See Thermal Considerations Section | ALL | | -40 | | +85 | °C |
| Storage Temperature | | ALL | -55 | | +125 | °C |
| INPUT CHARACTERISTICS | | | | | | |
| Operating Input Voltage | Vo=4.5V Vo=5.0V | ALL | 6.0 6.5 | 12 12 | 14 14 | Vdc |
| Input Under-Voltage Lockout | | | | | | |
| Turn-On Voltage Threshold | | ALL | | 5.0 | | Vdc |
| Turn-Off Voltage Threshold | | ALL | | 4.0 | | Vdc |
| Lockout Hysteresis Voltage | | ALL | | 1.0 | | Vdc |
| Maximum Input Current | Vin=0 to 14Vdc , Io=Io,max. | ALL | | | 10 | A |
| No-Load Input Current | Vo=0.7525V Vo=1.2V Vo=1.5V Vo=1.8V Vo=2.0V Vo=2.5V Vo=3.3V Vo=5.0V | ALL | | 40 40 50 50 60 65 75 95 | | mA |
| Off Converter Input Current | Shutdown input idle current | ALL | | | 10 | mA |
| Inrush Current (I ² t) | | ALL | | | 0.4 | A ² s |
| Input Reflected-Ripple Current | P-P thru 1uH inductor, 5Hz to 20MHz | ALL | | 200 | | mA |
| OUTPUT CHARACTERISTIC | | | | | | |
| Output Voltage Set Point | Vin=Nominal Vin , Io=Io,max, Tc=25 | ALL | -1.5% | Vo,set | +1.5% | Vdc |
| Output Voltage Trim Adjustment Range | Selected by an external resistor | ALL | 0.7525 | | 5.0 | Vdc |
| Output Voltage Regulation | | | | | | |
| Load Regulation | Io=Io.min to Io,max | ALL | -0.5 | | +0.5 | % |
| Line Regulation | Vin=low line to high line | ALL | -0.2 | | +0.2 | % |
| Temperature Coefficient | Ta=-40°C to 85°C | ALL | -0.03 | | +0.03 | %/ |
| Output Voltage Ripple and Noise | 5Hz to 20MHz bandwidth | | | | | |
| Peak-to-Peak | Full Load, 1uF ceramic and 10uF tantalum | ALL | | | 75 | mV |
| RMS | Full Load, 1uF ceramic and 10uF tantalum | ALL | | | 30 | mV |
| External Capacitive Load | Low ESR | ALL | | | 8000 | uF |
| Operating Output Current Range | | ALL | 0 | | 10 | A |
| Output DC Current-Limit Inception | Output Voltage =90% Nominal Output Voltage | ALL | 15 | 20 | 25 | A |
| Shout Circuit Protection | Continuous with Hiccup Mode | | | | | |
| Sequency Slew Rate Capability | dVSEQ/dt | | 0.1 | | 1.0 | V/ms |
| Sequencing Delay Time | | | 10 | | | ms |
| Tracking Accuracy | Power up Power down | ALL | | | 200 400 | mV |
| Power Good Signal | Asserted Logic High Vo | Suffix "P" | 90 | | 110 | % |



PART NUMBER: VPOL10A-12W-SIP

DESCRIPTION: point of load converter

| | | | | | | |
|--|---|-----------------|----------|--|--|------------|
| Error Band | 50% Step Load Change, di/dt=2.5A/us | ALL | | | 200 | mV |
| Setting Time (within 1% Vout nominal) | 50% Step Load Change, di/dt=2.5A/us | ALL | | | 200 | us |
| EFFICIENCY | | | | | | |
| 100% Load | Vo=0.7525V Vo=1.2V Vo=1.5V Vo=1.8V Vo=2.0V Vo=2.5V Vo=3.3V Vo=5.0V | ALL | | | 82 87 89 90 91 92 93 95 | % |
| ISOLATION CHARACTERISTICS | | | | | | |
| Input to Output | Non-isolation | ALL | 0 | | | Vdc |
| FEATURE CHARACTERISTICS | | | | | | |
| Switching Frequency | | ALL | | | 300 | KHz |
| ON/OFF Control, Positive Logic Remote On/Off Logic Low (Module Off) Logic High (Module On) | or Open Circuit | VPOL10A-12W-SIP | 0 | | 0.4 Vin | Vdc Vdc |
| ON/OFF Control, Negative Logic Remote On/Off Logic Low (Module On) Logic High (Module Off) | or Open Circuit | VPOL10A-12W-SIP | 0 2.8 | | 0.4 Vin | Vdc Vdc |
| ON/OFF Current (for both remote on/off logic) | Ion/off at Von/off=0.0V | ALL | | | 1 | mA |
| Leakage Current (for both remote on/off logic) | Logic High, Von/off=14V | ALL | | | 1 | mA |
| Turn-On Delay and Rise Time | | | | | | |
| Turn-On Delay Time, From On/Off Control | Von/off to 10%Vo,set | ALL | | | 3 | ms |
| Turn-On Delay Time, From Input | Vin,min. to 10%Vo,set | ALL | | | 3 | ms |
| Output Voltage Rise Time | 10%Vo,set to 90%Vo,set | ALL | | | 4 | ms |
| Over Temperature Protection | | ALL | | | 130 | |
| GENERAL SPECIFICATIONS | | | | | | |
| MTBF | Io=100%of Io,max;Ta=25°C per MIL-HDBK-217F | ALL | | | 0.92 | M hours |
| Weight | | ALL | | | 8.5 | grams |
| Dimensions | 2x0.51x0.327 inches (50.8x12.95x8.3 mm) | | | | | |

PART NUMBER: VPOL10A-12W-SIP

DESCRIPTION: point of load converter

5. Main Features and Functions

5.1 Operating Temperature Range

CUI INC's VPOL10A-12W-SIP series converters highly efficient converter design has resulted in its ability to operate over a wide ambient temperature environment (-40°C to 85°C). Due consideration must be given to the de-rating curves when ascertaining maximum power that can be drawn from the converter. The maximum power drawn is influenced by a number of factors, such as:

- Input voltage range.
- Output load current.
- Air velocity (forced or natural convection).
- Mounting orientation of converter PCB with respect to the Airflow.
- Motherboard PCB design, especially ground and power planes.
- These can be effective heat sinks for the converter.

5.2 Over-Temperature Protection (OTP)

The VPOL10A-12W-SIP Series converters are equipped with non-latching over-temperature protection. A temperature sensor monitors the temperature of the hot spot (typically, top switch). If the temperature exceeds a threshold of 130°C (typical) the converter will shut down, disabling the output. When the temperature has decreased the converter will automatically restart.

The over-temperature condition can be induced by a variety of reasons such as external overload condition or a system fan failure.

5.3 Output Voltage Adjustment

Section 7.8 describes in detail as to how to trim the output voltage with respect to its set point. The output voltage on all models is trimmable in the range 0.7525 – 5.0Vdc.

5.4 Safe Operating Area (SOA)

Figure 2 provides a graphical representation of the Safe Operating Area (SOA) of the converter. This representation assumes ambient operating conditions such as airflow are met as per thermal guidelines provided in Sections 7.2 and 7.3.

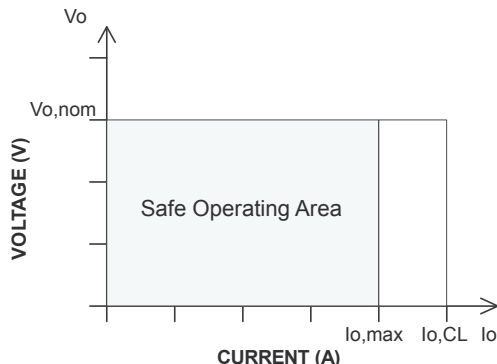


Figure 2. Maximum Output Current Safe Operating Area

5.5 Over Current Protection

All different voltage models have a full continuous short-circuit protection. The unit will auto recover once the short circuit is removed. To provide protection in a fault condition, the unit is equipped with internal over-current protection. The unit operates normally once the fault condition is

removed. The power module will supply up to 150% of rated current. In the event of an over current converter will go into a hiccup mode protection.

5.6 Remote ON/OFF

The remote ON/OFF input feature of the converter allows external circuitry to turn the converter ON or OFF. Active-high remote ON/OFF is available as standard. The VPOL10A-12W-SIP are turned on if the remote ON/OFF pin is high(=Vin), or left open. Setting the pin low(<0.4Vdc) will turn the converter 'Off'. The signal level of the remote on/off input is defined with respect to ground. If not using the remote on/off pin, leave the pin open (module will be on). The part number suffix "N" is Negative remote ON/OFF version. The unit is guaranteed OFF over the full temperature range if this voltage level exceeds 2.8Vdc. The converters are turned on If the on/off pin input is low (<0.4Vdc) or left open. The recommended VPOL10A-12W-SIP remote on/off drive circuit as shown as figure 3, 4.

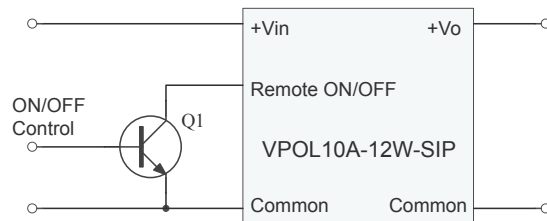


Figure 3. Positive Remote ON/OFF Input Drive Circuit

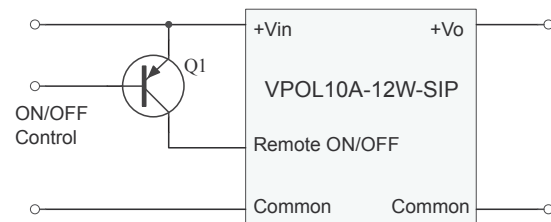


Figure 4. Negative Remote ON/OFF Input Drive Circuit

PART NUMBER: VPOL10A-12W-SIP

DESCRIPTION: point of load converter

5.7 UVLO (Under-Voltage Lockout)

The voltage on the Vcc pin determines the start of the operation of the Converter. When the input Vcc rises and exceeds about 5.0V the converter initiates a soft start. The UVLO function in the converter has a hysteresis (about 1V) built in to provide noise immunity at start-up.

5.8 Output Voltage Sequencing (Tracking)

The VPOL10A-12W-SIP series including a sequencing feature. It is able to implement various types of output voltage sequencing in customer applications, VPOL10A-12W-SIP series is accomplishable through an additional sequencing pin. When not using the sequencing feature, tie the SEQ pin to +Vin. When the signal voltage is applied to the SEQ pin, the output voltage tracks this voltage until the output reaches the set point voltage. The SEQ voltage needs to be set higher than the set point of the module. The output voltage will follow by the voltage on the SEQ pin. On the multiple modules application, we can connect SEQ pin and input signal voltage together to apply on the SEQ pin. Customers can get multiple modules to track their output voltages to follow the voltage of the SEQ pin.

To control this module for sequencing, when the input voltage applied to the module. The on/off pin is left unconnected so that the module is ON by default. After applying input voltage to the module, a minimum of 10msec delay is required before applying voltage on the SEQ pin and slew rate of the voltage on the SEQ pin see technical specifications "dV_{SEQ}/dt". After 10msec delay, an Analog voltage is applied to the SEQ pin and the output voltage of the module will track this voltage until output voltage reaches the set point voltage. To initiate simultaneous shutdown of the modules, the SEQ pin voltage is lowered in a controlled manner. Output voltage of the modules track the voltages below their set-point voltage voltages. A valid input voltage must be maintained until the tracking and output voltages reach ground potential to ensure a controlled shutdown of the modules.

A typical example testing circuit used master DC/DC converter and SIP Module as shown as below:

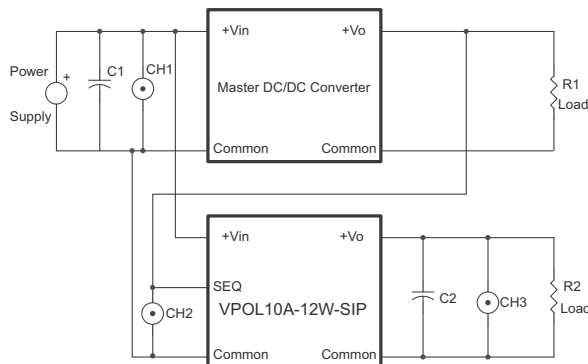


Figure 5. Example testing circuit of sequencing function

Power start up with SEQ signal
 Input Voltage=12Vdc
 Master DC/DC output voltage (CH1) = 5Vdc
 Salve DC/DC output voltage (CH2)=3.3Vdc
 Sequencing voltage= 0.6V/msec

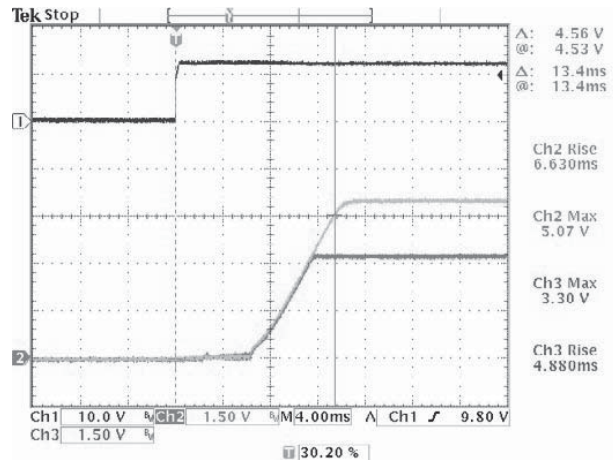


Figure 6. Example testing circuit of sequencing function

Power turn off with SEQ signal voltage
 Input Voltage=12Vdc (CH1)
 Master DC/DC output voltage (CH2) = 5Vdc
 Salve DC/DC output voltage (CH3)=3.3Vdc

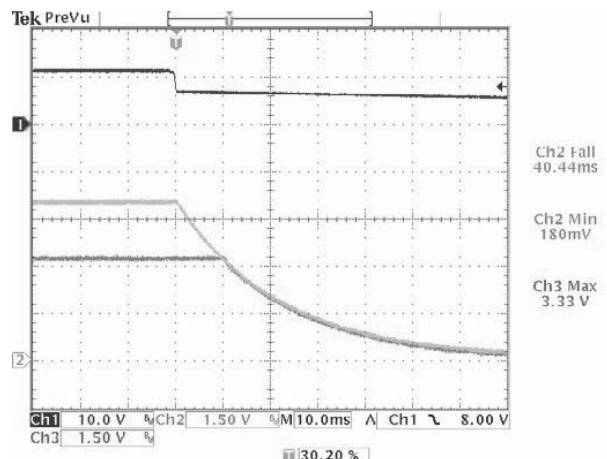


Figure 7. Example testing circuit of sequencing function

PART NUMBER: VPOL10A-12W-SIP

DESCRIPTION: point of load converter

6. Safety

6.1 Input Fusing and Safety Considerations.

Agency Approvals: The power Supply shall be submitted to and receive formal approval from the following test agencies.

1. The power supply shall be approved by a nationally recognized testing laboratory to UL/CSA 60950 3rd Edition (North America) and EN60950 (International)

2. CB Certificate from an internationally recognized test house in accordance with EN 60950.

The VPOL10A-12W-SIP series converters do not have an internal fuse. However, to achieve maximum safety and system protection, always use an input line fuse. The safety agencies require a time-delay fuse with a maximum rating of 20A.

7. Applications

7.1 Layout Design Challenges.

In optimizing thermal design the PCB is utilized as a heat sink. Also some heat is transferred from the SIP module to the main board through connecting pins. The system designer or the end user must ensure that other components and metal in the vicinity of the VPOL10A-12W-SIP series meet the spacing requirements to which the system is approved.

Low resistance and low inductance PCB layout traces are the norm and should be used where possible. Due consideration must also be given to proper low impedance tracks between power module, input and output grounds. The recommended VPOL10A-12W-SIP footprint as shown as figure 8.

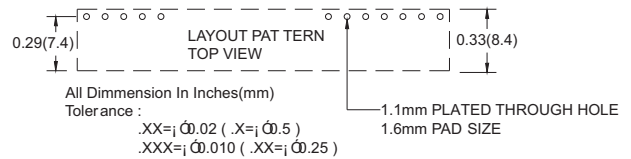


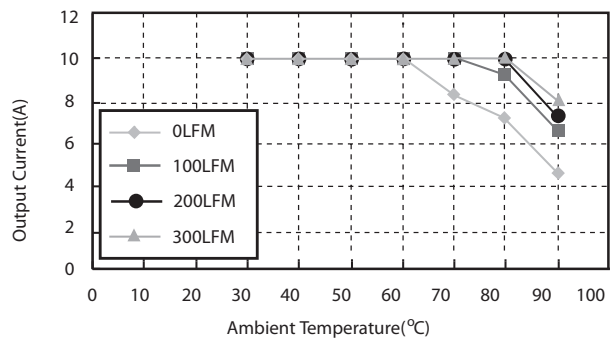
Figure 8. Recommended VPOL10A-12W-SIP Footprint



PART NUMBER: VPOL10A-12W-SIP

DESCRIPTION: point of load converter

TYPICAL POWER DERATING FOR 5 Vin 3.3 Vout



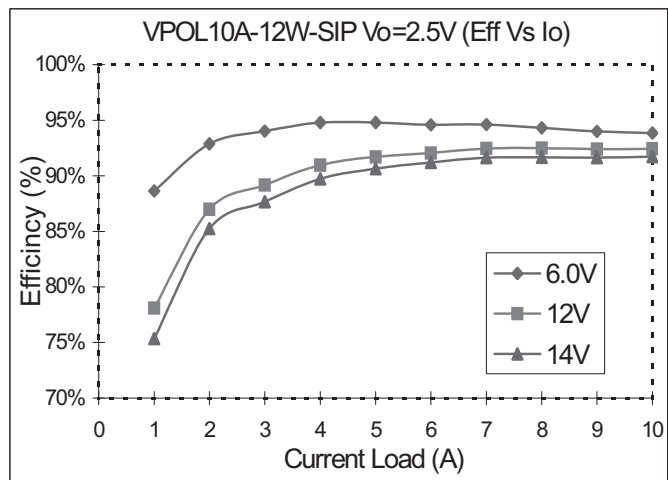
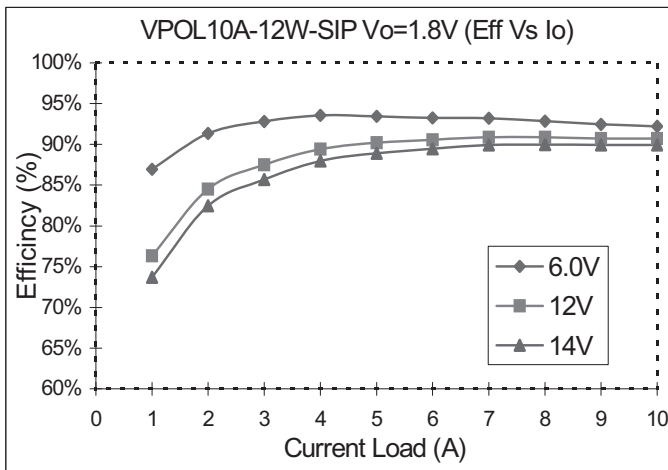
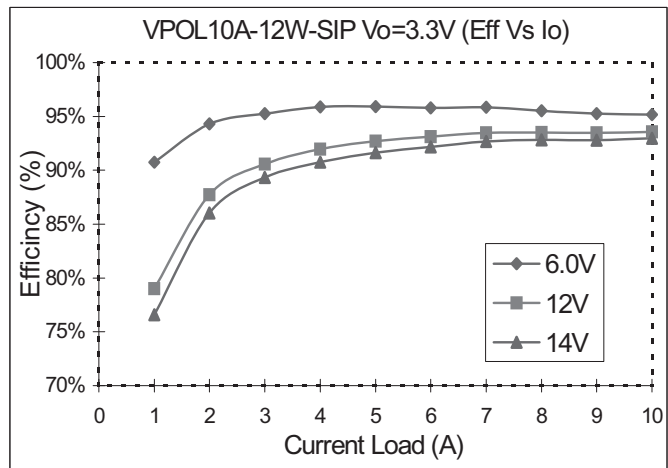
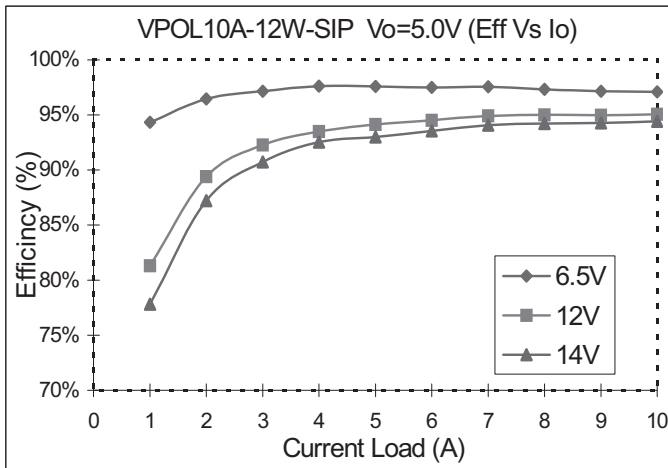
NOTE:

1. specific input & output derating curves available, please contact CUI INC for detail

PART NUMBER: VPOL10A-12W-SIP

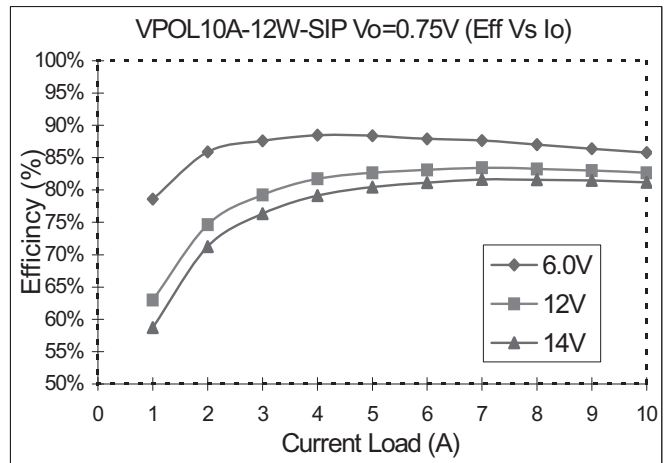
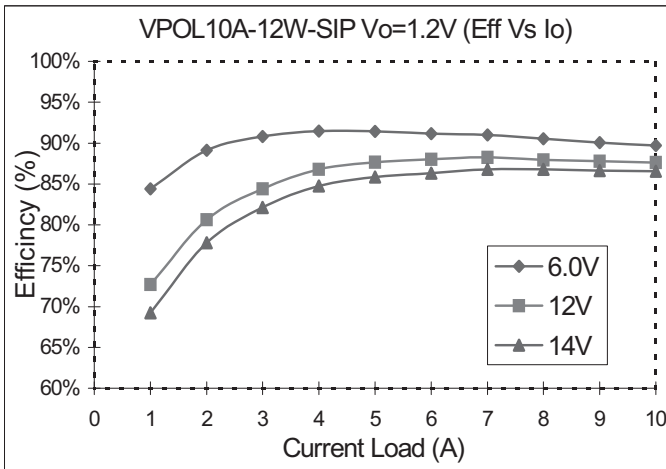
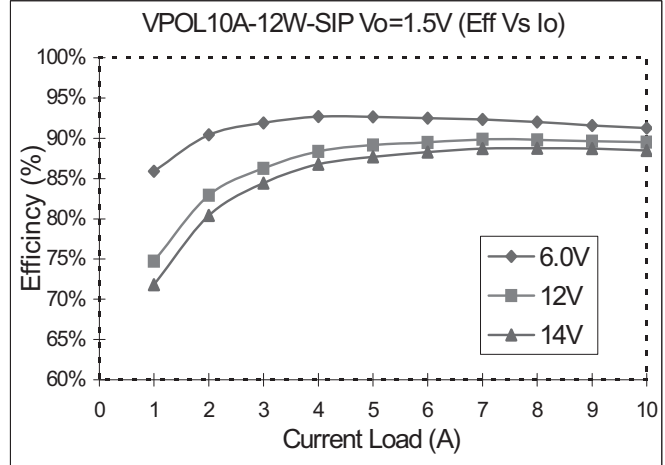
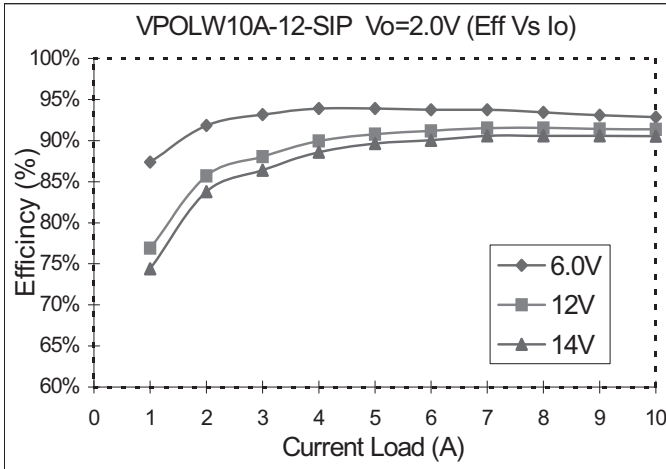
DESCRIPTION: point of load converter

7.5 Efficiency vs Load Curves



PART NUMBER: VPOL10A-12W-SIP

DESCRIPTION: point of load converter



PART NUMBER: VPOL10A-12W-SIP

DESCRIPTION: point of load converter

7.6 Input Capacitance at the Power Module

The VPOL10A-12W-SIP converters must be connected to a low AC source impedance. To avoid problems with loop stability source inductance should be low. Also, the input capacitors should be placed close to the converter input pins to de-couple distribution inductance. However, the external input capacitors are chosen for suitable ripple handling capability. Low ESR polymers are a good choice. They have high capacitance, high ripple rating and low ESR (typical <100mohm). Electrolytic capacitors should be avoided. Circuit as shown in Figure 12 represents typical measurement methods for ripple current. Input reflected-ripple current is measured with a simulated source Inductance of 1uH. Current is measured at the input of the module.

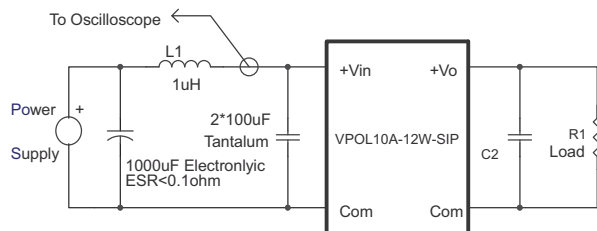


Figure 12. Input Reflected-Ripple Test Setup

7.7 Test Set-Up

The basic test set-up to measure parameters such as efficiency and load regulation is shown in Figure 13. Things to note are that this converter is non-isolated, as such the input and output share a common ground. These grounds should be connected together via low impedance ground plane in the application circuit. When testing a converter on a bench set-up, ensure that -Vin and -Vo are connected together via a low impedance short to ensure proper efficiency and load regulation measurements are being made. When testing the CUI INC's VPOL10A-12W-SIP series under any transient conditions please ensure that the transient response of the source is sufficient to power the equipment under test. We can calculate the

Efficiency

Load regulation and line regulation.

The value of efficiency is defined as:

$$\zeta = \frac{V_o \times I_o}{V_{in} \times I_{in}} \times 100\%$$

Where: Vo is output voltage,
Io is output current,
Vin is input voltage,
Iin is input current.

The value of load regulation is defined as:

$$Load.reg = \frac{V_{FL} - V_{NL}}{V_{NL}} \times 100\%$$

Where: V_{FL} is the output voltage at full load
V_{NL} is the output voltage at no load

The value of line regulation is defined as:

$$Line.reg = \frac{V_{HL} - V_{LL}}{V_{LL}} \times 100\%$$

Where: V_{HL} is the output voltage of maximum input voltage at full load.
V_{LL} is the output voltage of minimum input voltage at full load.

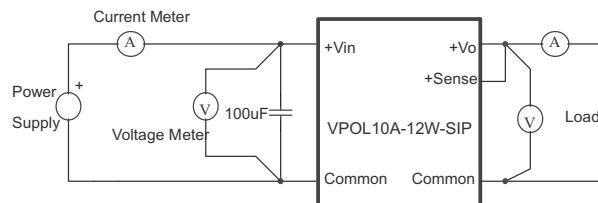


Figure 13. VPOL10A-12W-SIP Series Test Setup

7.8 Remote Sense Compensation

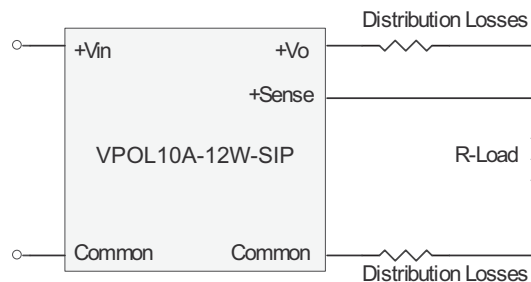
Remote Sense regulates the output voltage at the point of load. It minimizes the effects of distribution losses such as drops across the connecting pin and PCB tracks (see Figure 14). Please note however, the maximum drop from the output pin to the point of load should not exceed 500mV for remote compensation to work.

The amount of power delivered by the module is defined as the output voltage multiplied by the output current (VO x IO).

When using TRIM UP, the output voltage of the module will increase which, if the same output current is maintained, increases the power output by the module. Make sure that the maximum output power of the module remains at or below the maximum rated power.

When the Remote Sense feature is not being used, leave sense pin disconnected.

Figure 14. Circuit Configuration for Remote Sense Operation



PART NUMBER: VPOL10A-12W-SIP

DESCRIPTION: point of load converter

7.9 VPOL10A-12W-SIP Series Output Voltage Adjustment.

The output Voltage of the VPOL10A-12W-SIP can be adjusted in the range 0.7525V to 5.0V by connecting a single resistor on the motherboard (shown as Rtrim) in Figure 15. When Trim resistor is not connected the output voltage defaults to 0.7525V

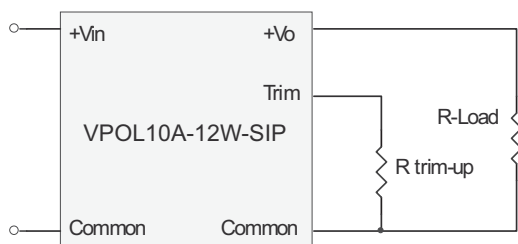


Figure 15. Trim-up Voltage Setup

The value of Rtrim-up defined as:

$$R_{trim} = \left(\frac{10500}{V_o - 0.7525} - 1000 \right)$$

Where:

Rtrim-up is the external resistor in ohm,

Vo is the desired output voltage

To give an example of the above calculation, to set a voltage of 3.3Vdc, Rtrim is given by:

$$R_{trim} = \left(\frac{10500}{3.3 - 0.7525} - 1000 \right)$$

Rtrim = 3.122K ohm

For various output values various resistors are calculated and provided in Table 3 for convenience.

| Vo,set (V) | Rtrim (Kohm) |
|------------|--------------|
| 0.7525 | Open |
| 1.2 | 22.46 |
| 1.5 | 13.05 |
| 1.8 | 9.024 |
| 2.0 | 7.417 |
| 2.5 | 5.009 |
| 3.3 | 3.122 |
| 5.0 | 1.472 |

Table 3 – Trim Resistor Values

7.10 Output Ripple and Noise Measurement

The test set-up for noise and ripple measurements is shown in Figure 16. a coaxial cable with a 50ohm termination was used to prevent impedance mismatch reflections disturbing the noise readings at higher frequencies. The Output Ripple & Noise is measured with 1uf ceramic and 10Uf tantalum. The measured position are 50mm to 75mm(2" to 3") from the module.

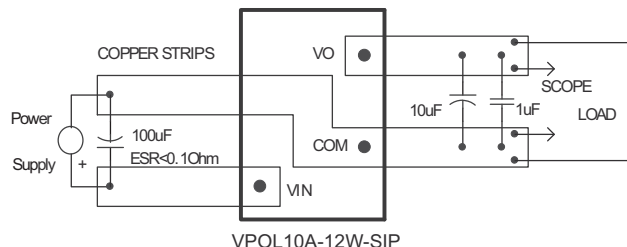


Figure 16. Output Voltage Ripple and Noise Measurement Set-Up

7.11 Output Capacitance

CUI INC's VPOL10A-12W-SIP series converters provide unconditional stability with or without external capacitors. For good transient response low ESR output capacitors should be located close to the point of load. For high current applications point has already been made in layout considerations for low resistance and low inductance tracks. Output capacitors with its associated ESR values have an impact on loop stability and bandwidth. CUI INC's converters are designed to work with load capacitance up-to 8,000uF. It is recommended that any additional capacitance, typically 1,000uF and low ESR (<20mohm), be connected close to the point of load and outside the remote compensation point.



PART NUMBER: VPOL10A-12W-SIP

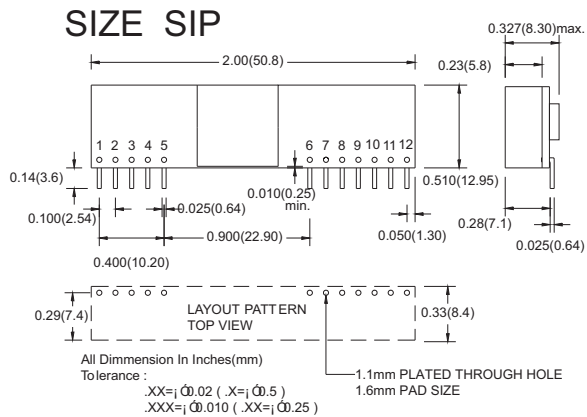
DESCRIPTION: point of load converter

8. Mechanical Outline Diagrams

8.1 VPOL10A-12W-SIP Mechanical Outline Diagrams

Dimensions are in millimeters and inches

Tolerance: x.xx ±0.02 in. (0.5mm) , x.xxx ±0.010 in. (0.25 mm) unless otherwise noted



| PIN CONNECTION | |
|----------------|----------------|
| Pin | FUNCTION |
| 1 | +Output |
| 2 | +Output |
| 3 | +Sense |
| 4 | +Output |
| 5 | Common |
| 6 | No Pin / PGood |
| 7 | Common |
| 8 | +V Input |
| 9 | +V Input |
| 10 | Sequency |
| 11 | Trim |
| 12 | On/Off Control |

Figure 17 VPOL10A-12W-SIP Mechanical Outline Diagram